



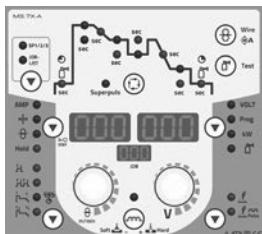
Phoenix 355 Progress puls HP MM TKM

MULTIMATRIX

/forceArc®/forceArc®puls
/rootArc®/rootArc®puls
/Pulse
/superPuls



Progress



Control	Page	87
Wire feed rolls	Page	296
Function torch	Page	318
Options/accessories	Page	280

- Compact inverter welding machine with one-knob Synergic control and integrated wire feed mechanism
- Excellent Multimatrix welding characteristics
- Adjustable start and end-crater functions
- Program operation with 16 programs per JOB
- Synergic or manual welding operation
- Equipped at no extra charge with Synergic characteristics for EWM forceArc, EWM forceArc puls, EWM rootArc, EWM rootArc puls and superPuls
- Equipped at no extra charge with Synergic characteristics for GMAW welding of steel/CrNi/aluminium
- Suitable for MMA welding, TIG welding and gouging at no extra charge
- Free WPQR package for certification up to and including EXC2 in accordance with EN 1090 and for welding of unalloyed steels up to and including S355
- Infinitely adjustable arc dynamics (choke effect)
- Large power reserves thanks to high duty cycle with all components heating up less as a result, guaranteeing a longer service life for machines when in use
- High-precision, powerful EWM eFeed 4-roll wire feed mechanism for secure feeding of all solid and flux cored wires
- Equipped for 1.2 mm steel wire
- Wire spool diameter up to 300 mm/D300, 200 mm/D200 possible with adapter
- Gas-cooled or optionally water-cooled with cool 50 cooling unit
- Excellent torch cooling, resulting in cost savings on consumables due to high-performance centrifugal pump and 5-litre water tank (cool50 cooling unit)
- Energy-saving thanks to high efficiency and standby function
- Easy, tool-free change of welding polarity
- Earth fault monitoring (PE protection)
- High mains voltage tolerances and therefore fully generator-compatible
- IP23 spray water protected
- Connection capability for remote control and function torch
- Option to network via LAN or WiFi thanks to Multimatrix technology, Xnet-compatible
- Trolley 55-5 trolley and cool50 cooling unit available

Mains voltage (tolerances)	3 x 400 V (-25 % - +20 %)
Mains fuses (slow-blow)	3 x 16 A
Open circuit voltage	80 V
Setting range for welding current	5 A - 350 A
Duty cycle 40 °C	350 A / 40 %
	300 A / 60 %
	270 A / 100 %
cos φ	0.99
Efficiency	88 %
Dimensions LxWxH in mm	625 x 300 x 480
Weight	33 kg
Dimensions cooling unit in mm	610 x 300 x 330
Weight, cooling unit	16.5 kg
Trolley dimensions L x W x H in mm	1015 x 505 x 1105
Trolley weight	35 kg

Type	Designation	Item no.
Phoenix 355 Progress puls HP MM TKM	–	090-005403-00502
MT301G M9 3m		094-500055-00000
MT301G M9 4m	MIG/MAG welding torch, gas-cooled	094-500055-00004
MT301G M9 5m		094-500055-00005
WK50mm² 350A/60% 4m/K	Completely assembled workpiece lead with terminal	092-000003-00000
GH 2x1/4" 2m	Gas hose	094-000010-00001
DM 842 Ar/CO2 230bar 30l D	Pressure regulator with manometer	394-002910-00030
OW CEE 16A/400V	Factory-fit option, mains plug including fitting	092-008214-00000
KOS25	Customised configuration with assembly for portable and compact systems	092-002686-00001
KOS27	Commissioning: 1 hour	KOS-V00027-00000



Phoenix 355 Progress puls HP MM TKM	Multiprocess MIG/MAG pulse welding machine with MULTIMATRIX technology, compact, portable, modular, Euro torch connector	090-005403-00502
cool50 U40	Cooling unit with centrifugal pump	090-008598-00502
MT301W M7 3m		094-500058-00000
MT301W M7 4m	MIG/MAG welding torch, water-cooled	094-500058-00004
MT301W M7 5m		094-500058-00005
WK50mm² 350A/60% 4m/K	Completely assembled workpiece lead with terminal	092-000003-00000
GH 2x1/4" 2m	Gas hose	094-000010-00001
DM 842 Ar/CO2 230bar 30l D	Pressure regulator with manometer	394-002910-00030
Trolley 55-5	Trolley for power source, 1 module, 10 l–50 l shielding gas cylinder, mounted	090-008632-00000
KF 23E-10, -10	Coolant (-10 °C), 9.3 l	094-000530-00000
OW CEE 16A/400V	Factory-fit option, mains plug including fitting	092-008214-00000
KOS25	Customised configuration with assembly for portable and compact systems	092-002686-00001
KOS27	Commissioning: 1 hour	KOS-V00027-00000