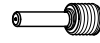
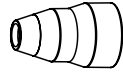
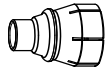


Model	Certification and voltage		Power supply includes	Power supply PN	Handheld torch configurations				Full-length machine torches		
					75° or 85° hand torches				w/remote pendant		
					15'	20'	25'	50'	25'	35'	50'
Powermax125	CSA 480 V	PWR SPLY W/CPC PORT V-DIV BD	059488			059536	059537	059539		059540	
		PWR SPLY W/CPC PORT V-DIV BD/SER INTFC	059489								
	CSA 600 V	PWR SPLY W/CPC PORT V-DIV BD	059509			059546	059547	059553		059553	
		PWR SPLY W/CPC PORT V-DIV BD/SER INTFC	059510								
	CE 400 V	PWR SPLY W/CPC PORT V-DIV BD	059486			059526	059527	059530		059531	
		PWR SPLY W/CPC PORT V-DIV BD/SER INTFC	059487								
CCC 380 V	PWR SPLY W/CPC PORT V-DIV BD (No PWR CORD)	059490			059556	059557	059558				
	PWR SPLY W/CPC PORT V-DIV BD/SER INTFC (No PWR CORD)	059491									
Powermax105	CSA 200-600 V	PWR SPLY	059370			059374	059375				
		PWR SPLY W/CPC PORT V-DIV BD	059371			059376	059377	059378		059379	
		PWR SPLY W/CPC PORT V-DIV BD/SER INTFC	059372								
	CE 230-400 V	PWR SPLY	059390			059394	059395				
		PWR SPLY W/CPC PORT V-DIV BD	059391			059396	059397	059398		059399	
		PWR SPLY W/CPC PORT V-DIV BD/SER INTFC	059392								
	CE 400 V	PWR SPLY	059410			059414	059415				
		PWR SPLY W/CPC PORT V-DIV BD	059411			059416	059417	059418		059419	
		PWR SPLY W/CPC PORT V-DIV BD/SER INTFC	059412								
	CCC 380 V	PWR SPLY	059430			059434	059435				
PWR SPLY W/CPC PORT V-DIV BD		059431			059436	059437	059438		059439		
PWR SPLY W/CPC PORT V-DIV BD/SER INTFC		059432									
CCC/CE 380V, 230-400 V	PWR SPLY/CPC/SERIAL/NO PWR CORD	059433									
	PWR SPLY/CPC/SERIAL/NO PWR CRD	059393									
Powermax65	CSA 200-600 V	PWR SPLY	087067			087108	087109				
		PWR SPLY W/CPC PORT V-DIV BD	087104			087113	087114	087115		087116	
		PWR SPLY W/CPC PORT V-DIV BD/SER INTFC	087105								
	CE 230-400 V	PWR SPLY	087068			087117	087118				
		PWR SPLY W/CPC PORT V-DIV BD	087106			087122	087123	087124		087125	
PWR SPLY W/CPC PORT V-DIV BD/SER INTFC	087107										
Powermax65	CSA 200-600 V	PWR SPLY	083234			083270	083271				
		PWR SPLY W/CPC PORT V-DIV BD	083266			083275	083276	083277		083278	
		PWR SPLY W/CPC PORT V-DIV BD/SER INTFC	083267								
	CE 230-400 V	PWR SPLY	083235			083279	083280				
		PWR SPLY W/CPC PORT V-DIV BD	083268			083284	083285	083286		083287	
PWR SPLY W/CPC PORT V-DIV BD/SER INTFC	083269										
Powermax45 XP	CSA 230 V	PWR SPLY	088092		088112		088114				
		PWR SPLY W/CPC PORT V-DIV BD	088104		088113		088115	088116	088117	088118	
		PWR SPLY W/CPC PORT V-DIV BD/SER INTFC	088105								
	CSA 480 V	PWR SPLY	088095		088126		088128				
		PWR SPLY W/CPC PORT V-DIV BD	088110		088127		088129				
		PWR SPLY W/CPC PORT V-DIV BD/SER INTFC	088111								
	CE/CCC 230 V	PWR SPLY	088093		088130		088132				
		PWR SPLY W/CPC PORT V-DIV BD	088106		088131		088133	088134	088135	088136	
		PWR SPLY W/CPC PORT V-DIV BD/SER INTFC	088107								
	CE/CCC 400 V	PWR SPLY	088094		088144		088146				
PWR SPLY W/CPC PORT V-DIV BD		088108		088145		088147	088148	088149	088150		
PWR SPLY W/CPC PORT V-DIV BD/SER INTFC		088109									
Powermax30 XP	CSA 120-230 V	PWR SPLY W/BLD AMERICA GRAPHIC AND CASE		088079							
		PWR SPLY AND CASE		088080							
	CE 120-230 V CE 230 V	PWR SPLY		088081							
		PWR SPLY AND CASE		088082							
				088083							
				088084							
Powermax30 Air	CSA 120-230 V	PWR SPLY W/BLD AMERICA GRAPHIC		088096							
		PWR SPLY		088097							
	CE 120-230 V	PWR SPLY		088098							

Mechanized torch configurations					Torch combo configurations					Educational configurations	Accessory combo configurations
Full-length machine torches					75° or 85° hand torch plus		75° or 85° hand torch plus			Curriculum plus	Eliminizer filter and guard plus
w/ interface serial and standard cables		w/o remote pendant w/o interface cable			15° hand torch		Full-length machine torch w/remote pendant			75° or 85° hand torch	75° hand torch
25'	50'	25'	35'	50'	25' (20' for 75° on Powermax45 XP)	50'	25' (20' for 75° on Powermax45 XP)	50'		25'	25'
					059538	059569		059541		059571	
059544	059545	059542		059543							
					059555	059570		059554			
059548	059549	059550		059551							
					059528	059572	059559				
059534	059535	059532		059533							
		059583		059584			059529				
		059560		059561							
		059386	059387								
			059380	059381	059382	059383	059384		059385		
059406	059407		059400	059401	059402	059403	059404				
			059420	059421	059422	059423	059424				
059426	059427										
			059440	059441	059442	059443	059444				
059446	059447										
059448	059449		059450	059451							
			087132	087137	087144	087145	087135		087126		087111
087138	087140										
			087131		087146	087147	087136				087120
087139	087141										
			083294	083302	083307	083308	083300		083288		083273
083303	083305										
			083293		083309	083310	083301				083282
083304	083306										
			088121	088122	088124		088123		088125		
088119	088120										
			088141						088138		
088139	088140										
			088155	088156					088152		
088153	088154										

Powermax30®

T30v hand torch consumables



Minimum order quantity		1	1	5	5	1	
Consumable type	Torch type	Amperage	Shield ¹	Retaining cap	Nozzle	Electrode	Swirl ring
Drag-cutting	Hand	30	220569	220483	220480	220478	220479

¹Optional deflector may be used to help maintain torch-to-work distance or may be used as a guide when cutting with templates



Minimum order quantity		1	1	1	1	
Consumable type	Torch type	Retaining cap	Nozzle	Electrode	Swirl ring	
HyAccess drag-cutting (15-30 A)	Hand	420148	420144	420137	220670	
HyAccess gouging (15-30 A)			420147			
Quantity in kit		1	1	1	2	1
HyAccess kit - 428337 (15-30 A)	Hand	420148	420144 (cutting)	420147 (gouging)	420137	420211
		HyAccess cutting only starter pack - 428443 ⁴				
		HyAccess gouging only starter pack - 428444 ⁵				



⁴Starter pack contains 1 retaining cap (420148), 1 cutting nozzle (420144) and 1 electrode (420137)

⁵Starter pack contains 1 retaining cap (420148), 1 gouging nozzle (420147) and 1 electrode (420137)



T30v hand torch parts

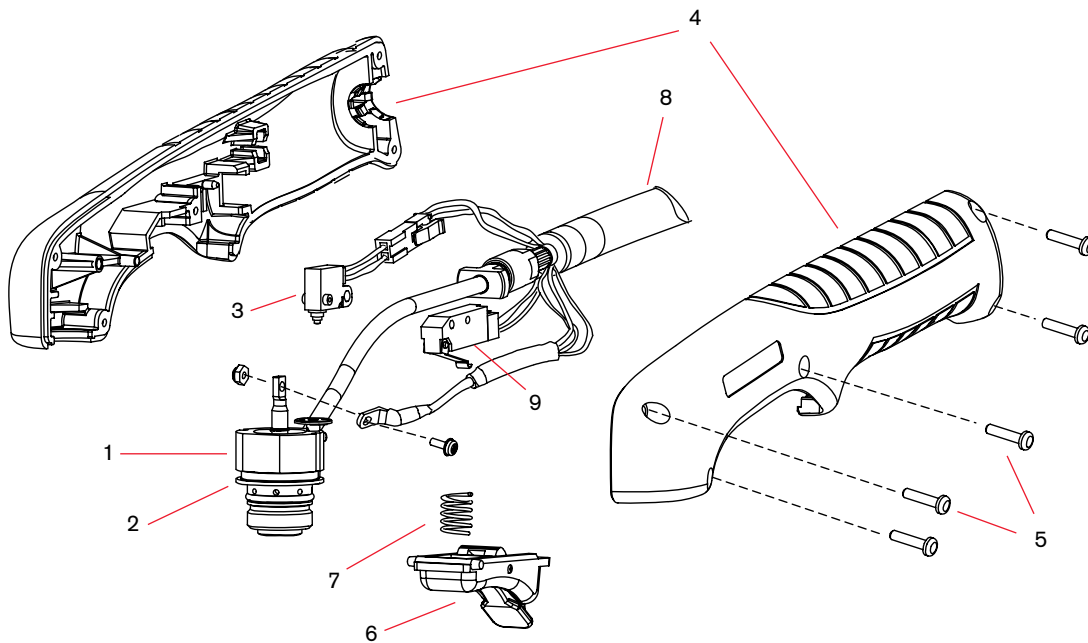
For use with the Powermax30®



T30v hand torch parts

Item	Kit/Part number	Description
	088001*	T30v hand torch assembly with 4.5 m (15') leads
1	228112	Kit: T30v main body
2	058503	O-ring: Viton .626 x .070
3	228109	Kit: Cap-off sensor
4	228111	Kit: T30v torch handle
5	075339	Handle screws
6	002244	Safety trigger
7	027254	Spring
8	228113	Kit: T30v 4.5 m (15') torch lead
9	128642	Kit: T30v start switch
	123868	Work lead with clamp, 4.5 m (15')

*Assembly includes consumables



Powermax45®

T45v/T45m hand/machine torch consumables



Minimum order quantity		1	1	5	5	1		
Consumable type	Torch type	Shield/deflector	Retaining cap	Nozzle		Electrode	Swirl ring	
Drag cutting (15–45 A)	Hand	220569 (30 A) ¹	220483 (30 A) ¹	220480 (30 A) ¹		220478 (30 A) ¹	220479 (30 A) ¹	
		220674 (45 A)	220713 (45 A)	220671 (45 A) ²		220669 (45 A) ²	220670 (45 A)	
Quantity in kit		2	1	1	6	7	1	
Essential cutting kit – 851478 CSA (15–45 A)	Hand	220674	220717 (Deflector) ³	220713	220671	220718 (Unshielded)	220669	220670
Essential cutting kit – 851477 CE (15–45 A)					220671			
				Combination kit 428442 ⁴				



¹Use T30v 30 A consumables for fine feature cutting on thin metals.
²Consumable available in bulk packaging. See order information below.
³Components are unique to the CSA kit, part number 851478.
⁴Kit contains 2 nozzles (220671) and 2 electrodes (220669).



Minimum order quantity		1	1	5	5	1
Consumable type	Torch type	Shield/deflector	Retaining cap	Nozzle	Electrode	Swirl ring
Mechanized (15–45 A)	Machine	220673 ²	220713 or 220719 (ohmic)	220671 ²	220669 ²	220670

²Consumable available in bulk packaging. See order information below.



Minimum order quantity		1	1	5	5	1
Consumable type	Torch type	Shield/deflector	Retaining cap	Nozzle	Electrode	Swirl ring
Gouging ⁵ (15–45 A)	Hand/Machine	220675	220713	220672	220669 ²	220670

²Consumable available in bulk packaging. See order information below.




Minimum order quantity		1	1	5	5	1
Consumable type	Torch type	Shield/deflector	Retaining cap	Nozzle	Electrode	Swirl ring
Unshielded ⁶ (15–45 A)	Hand/Machine	220717	220713	220718	220669 ²	220670

²Consumable available in bulk packaging. See order information below.
³In countries following CE standards, unshielded consumables may only be used in mechanized applications.

See pages 64–65 for current system part number information.



Minimum order quantity		1	1	1	1	
Consumable type	Torch type	Retaining cap	Nozzle	Electrode	Swirl ring	
HyAccess drag-cutting (15-45 A)	Hand	420148	420144	420137	220670	
HyAccess gouging (15-45 A)			420147			
Quantity in kit		1	1	1	2	1
HyAccess kit - 428337 (15-45 A)	Hand	420148	420144 (cutting)	420147 (gouging)	420137	420211 ⁴
		HyAccess cutting only starter pack - 428443 ⁵ HyAccess gouging only starter pack - 428444 ⁶				



⁴Part number 420211 is interchangeable with part number 220670

⁵Starter pack contains 1 retaining cap (420148), 1 cutting nozzle (420144) and 1 electrode (420137)

⁶Starter pack contains 1 retaining cap (420148), 1 gouging nozzle (420147) and 1 electrode (420137)

T45v/T45m consumable bulk kits

Order quantity	25	25	10
Bulk kit part number	228843	228844	228845
Contents	220671 nozzle	220669 electrode	220673 shield



See pages 64-65 for current system part number information.

T45v hand torch parts

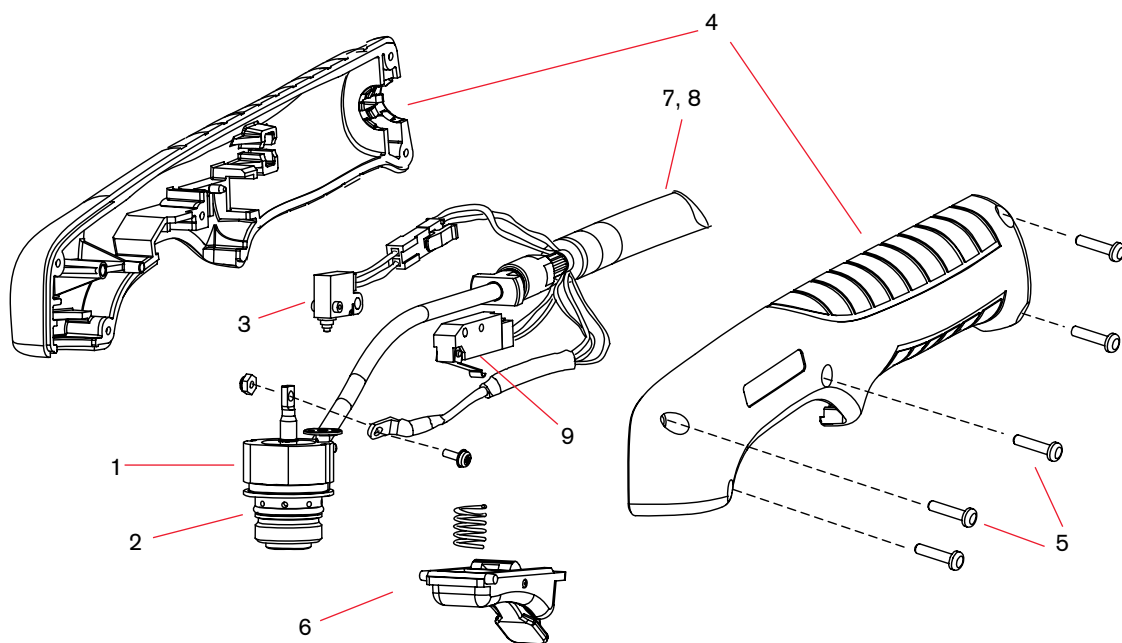
For use with the Powermax45®



T45v hand torch parts

Item	Kit/Part number	Description
	088008 ¹	T45v hand torch assembly with 6.1 m (20') leads
	088009 ¹	T45v hand torch assembly with 15.2 m (50') leads
1	228346	Kit: Torch body replacement
2	058503	O-ring: torch body
3	228109	Kit: Cap-sensor switch replacement
4	228313	Kit: handle
5	075714	Handle screws
6	002244	Safety trigger assembly
7	228315	Kit: Torch lead replacement, 6.1 m (20')
8	228316	Kit: Torch lead replacement, 15.2 m (50')
	228300	Work lead with clamp, 6.1 m (20')
	228307	Work lead with clamp, 15.2 m (50')
9	128642	Kit: T45v/T30v start switch replacement

¹Assembly includes consumables.



See pages 64-65 for current system part number information.

T45m machine torch parts

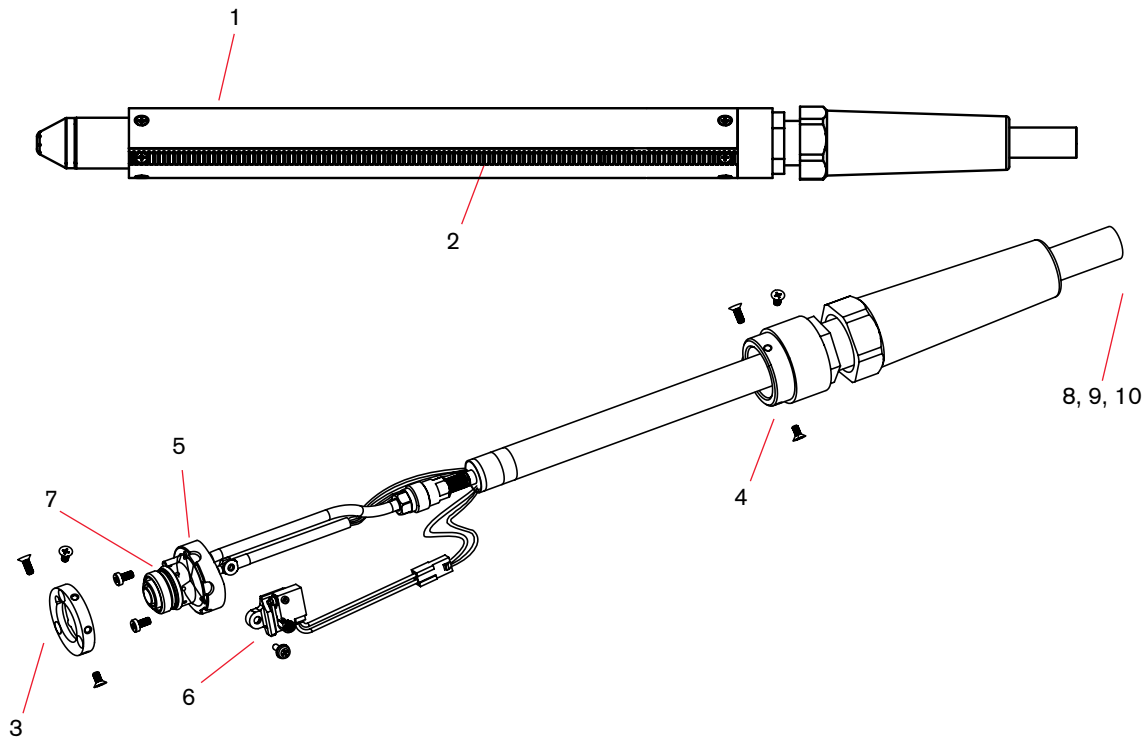
For use with the Powermax45®



T45m machine torch parts

Item	Kit/Part number	Description
	088010 ¹	T45m machine torch assembly with 7.6 m (25') leads
	088011 ¹	T45m machine torch assembly with 10.7 m (35') leads
	088012 ¹	T45m machine torch assembly with 15.2 m (50') leads
1	228228	Kit: T45m positioning sleeve
2	228229	Kit: T45m removable gear rack
3	228322	Kit: Front mounting ring
4	228323	Kit: Rear mounting ring
5	228320	Kit: T45m torch body replacement
6	228321	Kit: T45m cap-sensor switch replacement
7	058503	O-ring: torch body
8	228317	T45m torch lead replacement, 7.6 m (25')
9	228318	T45m torch lead replacement, 10.7 m (35')
10	228319	T45m torch lead replacement, 15.2 m (50')
	128650	On/Off pendant for machine torch, 7.6 m (25')
	128651	On/Off pendant for machine torch, 15.2 m (50')
	128652	On/Off pendant for machine torch, 22.8 m (75')
	228300	Work lead with clamp, 6.1 m (20')
	228307	Work lead with clamp, 15.2 m (50')

¹Assembly includes consumables.



See pages 64–65 for current system part number information.