

MicroStep®



Selected References

The right solution for every cutting task

Plasma
Laser
Oxyfuel
Waterjet

The right **solution**

for every cutting task



2D cutting



Bevel cutting



Pipe & profile cutting



Dome cutting

Plasma

Laser

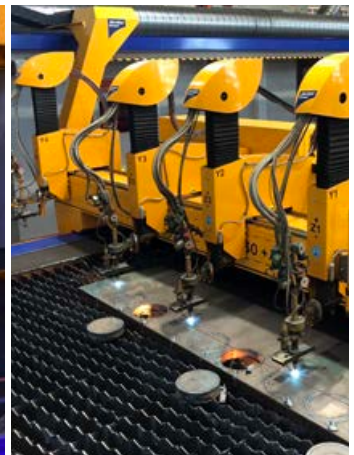
Oxyfuel

Waterjet

Can be combined with additional technologies:

- Drilling, tapping, countersinking
- Marking
- Scanning
- Material handling

www.microstep.eu



MACHINE PROFILE

DRM series

- Working area 13,500 x 3,000 mm
- Drilling up to Ø 50 mm and tapping up to M33

MG series

- Working area 31,000 x 3,000 mm

1. gantry

- Plasma rotator for weld preparation up to 50° with auto-calibration feature (ACTG®)
- 2D plasma
- 2x 2D oxyfuel
- CCD camera for detecting of position of drilled holes

2. gantry

- Plasma rotator for weld preparation up to 50° with auto-calibration feature (ACTG®)

- 2D plasma
- 2x 2D oxyfuel
- CCD camera for detecting of position of drilled holes

MG series

- Working area 18,000 x 3,000 mm

1. gantry

- Plasma rotator for weld preparation up to 50° with auto-calibration feature (ACTG®)
- 2D plasma
- 2x 2D oxyfuel
- CCD camera for detecting of position of drilled holes

2. gantry

- 4x 2D oxyfuel

2002 saw the merger of two leading ropeway manufacturers with a long tradition: Doppelmayr and Garaventa. This gave rise to the Doppelmayr/Garaventa Group as global competence centers for circulating ropeway systems such as gondolas and chairlifts as well as reversible aerial tramways and funicular railways. They have both played a major role in technical advances and achieved many milestones which have contributed to the breathtaking pace of development in the ropeway industry.



MACHINE PROFILE

DRM series

- Working area 50,000 x 8,000 mm (underwater cutting)
- Plasma rotator for weld preparation up to 50° with auto-calibration feature (ACTG®)
- Inkjet marking
- Operator platform with MMI console on the gantry

2x CombiCut series

- Working area 12,000 x 3,500 mm
- 2x Plasma rotator in parallel operation for weld preparation up to 50° + auto-calibration feature (ACTG®)
- Plasma marking
- Inkjet marking
- Automatic plate edge detection

2x DRM-PL series

- Working area 12,000 x 3,500 mm
- Plasma rotator for weld preparation up to 50° with auto-calibration feature (ACTG®)
- Inkjet marking
- Sand blasting unit for primer removal + Plasma marking
- Automatic plate edge detection

Meyer Turku Oy is one of the leading European shipbuilding companies. The company provides state-of-the art technology solutions, advanced construction processes and cutting-edge innovations for cruise operators and other ship owners. Meyer Turku specializes in building cruise ships, car-passenger ferries and special vessels. Over the years the shipyard has built more than 1,300 new ships for customers around the world.



MACHINE PROFILE

3x MG series

- Working area 27,000 x 3,500 mm
- Plasma rotator for weld preparation up to 45°
- Inkjet marking
- Automatic plate edge detection

MG series

- Working area 27,000 x 3,500 mm
- Plasma rotator for weld preparation up to 45° with tool adjustment station
- Inkjet marking
- Automatic plate edge detection

MG series

- Working area 27,000 x 3,500 mm
- Plasma rotator for weld preparation up to 50° with auto-

calibration feature (ACTG®)

- Inkjet marking
- Automatic plate edge detection

CombiCut series

- Working area 20,000 x 3,000 mm
- 2x 2D oxyfuel
- 2x G-multi station for stripe cutting with 3x 2D oxyfuel torches on each
- Inkjet marking

CombiCut series

- Working area 9,000 x 3,000 mm
- 2D plasma
- 2D oxyfuel
- Inkjet marking

Royal IHC with its 52 locations worldwide is a reliable supplier of innovative and efficient equipment, vessels and services for the offshore, dredging and wet mining markets. With a history steeped in Dutch shipbuilding since the mid-17th century, Royal IHC's shipyards have in-depth knowledge and expertise of engineering and manufacturing high-performance integrated vessels and equipment and providing sustainable services.



MACHINE PROFILE

ProfileCut series

- Cutting of H, I, U beams up to HEB 600 and a length of 13,500 mm
- Cutting of pipes Ø 30 – 500 mm up to a length of 13,500 mm
- 3D plasma rotator – pantograph with tilting up to 120° for weld preparation on beams and pipes + auto-calibration feature (ACTG®)
- 3D scanner for scanning of beams

MSF series

- Working area 3,000 x 1,500 mm
- 2D fiber laser – 2 kW
- Automatic shuttle table

Namaqua Engineering provides services in all major engineering disciplines. It was founded in 1998 in Vredendal by Stokkies van Zyl who identified the need for engineering services in the area. Its management team consists of qualified members dedicated to providing competent and professional services in accordance with international standards. It has more than 15 years of experience in the wine, mining and construction industries.



MACHINE PROFILE

MG series (Belgium)

- Working area 27,000 x 4,000 mm
- 1. gantry
- Plasma rotator for weld preparation up to 50° with auto-calibration feature (ACTG®)
- 2D plasma

2. gantry

- 3x 2D oxyfuel
- 2D plasma

MG series (Poland)

- Working area 24,000 x 4,000 mm
- Plasma rotator for weld preparation up to 50° with auto-calibration feature (ACTG®)
- 4x 2D oxyfuel

Smulders (of Eiffage Group) is an international steel construction company with more than 900 employees working across different locations in Belgium, the Netherlands, the United Kingdom and Poland. The company is offering more than 50 years of experience in engineering, construction, supply and assembly of steel constructions for offshore oil & gas, offshore wind and civil engineering industries. Smulders is a member of the French conglomerate Eiffage Group.



MACHINE PROFILE

MG series (Switzerland)

- Working area 21,000 x 3,500 mm
- Plasma rotator for weld preparation up to 50° with auto-calibration feature (ACTG®)
- 2D plasma
- Drilling up to Ø 40 mm and tapping up to M33
- Inkjet marking

CombiCut series (Slovakia)

- Working area 12,000 x 3,000 mm
- 6x 2D oxyfuel

MicroLas series (Slovakia)

- Working area 3,000 x 1,500 mm
- 2D CO₂ laser – 3,3 kW
- Automatic shuttle table

The stürmsfs AG based in Goldach, Switzerland is an internationally operating steel processor with production sites in Switzerland, Austria and Slovakia. The company, which employs 270 people, is a steel trader and manufacturer in the steel, metal and alternative materials sectors. The roots of stürmsfs date back to 1835. In 2011, today's stürmsfs AG was created through the merger of the long-established companies Sturm AG and the Steel + Metal Division of SFS Locher AG.

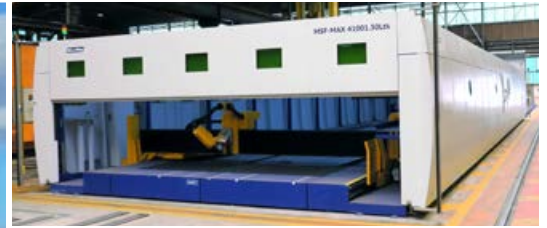


MACHINE PROFILE

MG series

- Working area 3,000 x 3,000 mm
- 2x 2D plasma
- Automatic shuttle table

BRÜGGEN is the leading European supplier of swap systems for trucks and semi-trailers for goods transport by road that are supplied under the well-known brand KRONE. Founded in 1990, the company with two production sites in Germany is also a service provider for surface coating and operates one of the most modern coating plants in Europe.



MACHINE PROFILE

MSF Max series

- Working area for sheets 2x 20,000 x 3,000 mm, total effective length 41,000 mm
- Laser bevel head for weld preparation up to 45° with auto-calibration feature (ACTG®)
- 8 kW fiber laser source
- Mobile safety cabin with integrated laser source and control system

Located in Saint-Nazaire on the Atlantic coast of France for 150 years, Chantiers de l'Atlantique is a shipbuilding company dedicated to maritime construction and fleet operating services. Thanks to the expertise of its staff and sub-contractor network and its modern production facilities, the company counts among the leaders in designing, building, assembling and commissioning highly complex ships and maritime installations.



MACHINE PROFILE

MG series

- Working area 12,000 x 4,000 mm
- 2x Plasma rotator in parallel operation for weld preparation up to 50° + auto-calibration feature (ACTG®)
- Drilling up to Ø 40 mm and tapping up to M33

MasterCut series

- Working area 9,000 x 2,000 mm
- 2D plasma

The portfolio of Bohnacker Metall GmbH & Co. KG, founded in 1949, includes welding, straightening, stamping, laser cutting, fine plasma cutting, oxy-fuel cutting and 3D construction, ranging from the smallest custom jobs to large assemblies for spectacular projects worldwide. The customers of the job cutting company are small locksmiths and private individuals as well as corporations and world market leaders.



MACHINE PROFILE

MG series

- Working area 28,500 x 3,000 mm

1. gantry

- Plasma rotator for weld preparation up to 45°

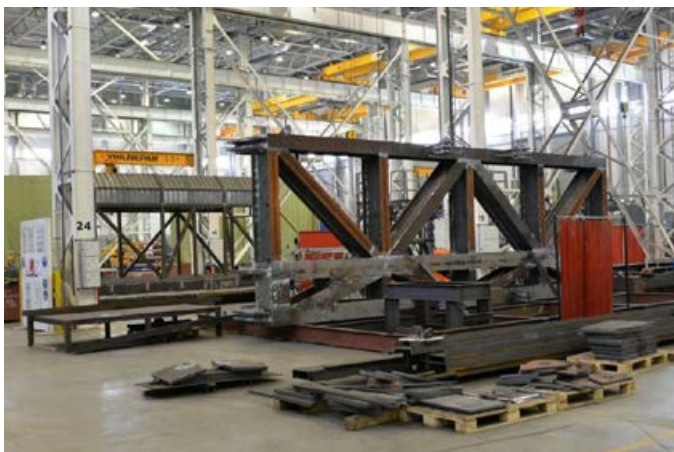
2. gantry

- Plasma rotator for weld preparation up to 45°

CombiCut series

- Working area 15,000 x 3,000 mm
- 2x 2D oxyfuel

BAUER Maschinen GmbH produces the entire range of equipment for special civil engineering such as rotary drilling rigs, diaphragm walls and soil mixing units. Since 2001 BAUER Maschinen GmbH has been operating on the international market as an independent entity within the global BAUER Group.



MACHINE PROFILE

3x MG series

- Working area 18,000 x 2,500 mm
- Plasma rotator for weld preparation up to 45° with auto-calibration feature (ACTG®)
- 2x 2D oxyfuel
- Drilling up to Ø 40 mm and tapping up to M24

The Russian division of the Texas (US) based National Oilwell Varco concern has been offering robust innovative solutions to answer the challenges of Russia's complex oil and gas industries since 1994. A huge selection of products comes across its three segments: NOV Rig Systems, NOV Wellbore Technologies and NOV Completion & Production Solutions.

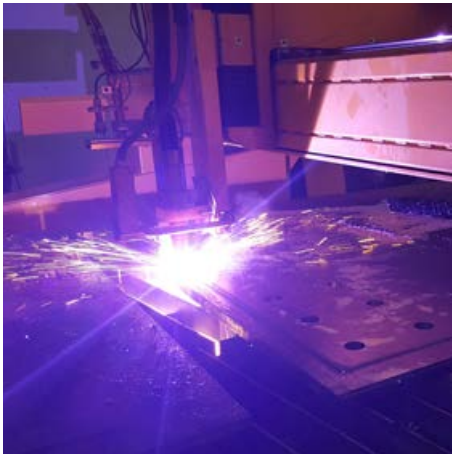


MACHINE PROFILE

MG series

- Working area 24,000 x 3,500 mm (underwater cutting)
- Plasma rotator for weld preparation up to 50° with auto-calibration feature (ACTG®)
- 2D plasma
- Scanner for Additional Beveling Process (ABP)
- Micro-percussion marking

thyssenkrupp Stahlkontor GmbH offers a comprehensive range of rolled steel products ranging from slabs, cobble plates, scaffoldings and heavy plates to coils and tubes. In addition to a wide materials selection the company offers also material processing services and customized deliveries. It is a recognised partner to major distributors and processors in Germany and abroad.



MACHINE PROFILE

CombiCut series

- Working area 12,000 x 3,000 mm
- 2D plasma
- 2D oxyfuel
- Drilling up to Ø 40 mm and tapping up to M33

The Indian subsidiary of Zamil Steel Buildings Saudi Arabia is a major player in the manufacture and assembly of prefabricated buildings and structural steel. Since the start of commercial production in February 2008, Zamil Steel India has delivered more than 1,250 projects with more than 5,000 buildings and an area of approximately 4 million square kilometers including petrochemical project structures, power plant structures, aircraft hangars and many more.



MACHINE PROFILE

MasterCut series

- Working area 12,000 x 3,000 mm
- Plasma bevel head with auto-calibration feature (ACTG®)

CombiCut series

- Working area 12,000 x 3,000 mm
- Oxyfuel rotator with auto-calibration feature (ACTG®)
- Scanner for Additional Beveling Process (ABP)
- 2D oxyfuel

Solintal is a leading Spanish company in the design, manufacturing and supply of comprehensive tools for earthmoving and mining machinery as well as solutions for energy, engineering and recycling sectors. With facilities covering over 16,000 m², Solintal has gained recognition for being a modern company with philosophy based on innovation, improving of its services and adopting a personal approach towards its customers.



MACHINE PROFILE

CombiCut series

- Working area 24,000 x 6,000 mm
- Plasma rotator for weld preparation up to 45° with auto-calibration feature (ACTG®)
- 2x 2D oxyfuel
- Inkjet marking
- Punch marking with a small drilling unit

Agility Subsea Fabrication is a world leading subsea fabricator based in Norway. Close to 200 employees represent the company's core competence, which is fabrication of subsea template and manifold systems, subsea processing systems and SURF structures.



Guangzhou Hongxun Elevator Machinery Co., Ltd. (China) Elevator Machinery



MACHINE PROFILE

ProfileCut series

- Fully automatic beam cutting line
- Cutting of H, I, U, L beams with size range HE120A – HE450A and a length up to 12,000 mm
- 3D plasma rotator – pantograph with tilting up to 120° for weld preparation on beams and pipes + auto-calibration feature (ACTG®)
- 3D scanner for scanning of beams
- Automatic loading, feeding and unloading of beams

HEM (of Hongxun Elevator Accessories Group) owns 4 production centers and has more than 1,100 employees. The enterprise is highly-technology-oriented and keen to invest in advanced equipment. The company was founded in 1979 and over time became a strong supplier of many famous elevator companies, such as HITACHI, OTIS, FUJI and others.



MACHINE PROFILE

MG series

- Working area 13,500 x 3,500 mm
- Plasma rotator for weld preparation up to 45° with auto-calibration feature (ACTG®)
- Inkjet marking

MG series

- Working area 13,500 x 3,500 mm
- Plasma rotator for weld preparation up to 45° with auto-calibration feature (ACTG®)
- 2x Inkjet marking

Neptune Shipyards BV is a maritime service provider specialized in workboats for the offshore and dredging markets. The services consist of building, repair, refit, maintenance and charter. The company offers a broad range of products and services in the shipbuilding and ship-trading sector including tugboats, specialized workboats, multipurpose pusher tugs, crew boats, survey boats and pontoons, which they deliver all over the world. The shipyards cuts its own steel components for the hulls, with enormous precision and speed.

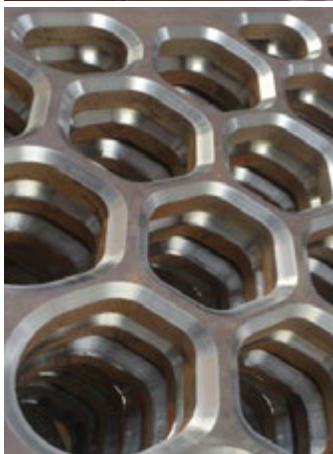


MACHINE PROFILE

MSF series

- Working area 12,000 x 2,500 mm
- 2x 2D fiber laser – 4 kW
- Automatic shuttle table

The ISO 9001:2008 certified company has been operating for 17 years as a service center for processing of sheet metal – the competences include sub-supply of products from mild steel, stainless steel or electro-galvanized steel, produced by means of laser cutting, plasma cutting, punching and bending. CACCIN's modern 5,000 m² production area holds equipment able to process sheet metals with sizes up to 12 x 3 m and thicknesses up to 30 mm.



MACHINE PROFILE

DRM series

- Working area 7,500 x 3,000 mm
- Plasma rotator for weld preparation with auto-calibration feature (ACTG®)
- Drilling up to Ø 40 mm and tapping up to M33 with a strengthened construction for drilling into Hardox
- 2x 2D oxyfuel

Damatech is a steel service center specialized in pre-hardened steel. It has had a strategic partnership with SSAB for many years and is a Toolox and Hardox Wearparts partner. The company has many fully automatic band sawing machines, a waterjet cutting machine and CNC machining centers. The investment into MicroStep's oxyfuel/plasma machine equipped with a drilling unit enabled the company to produce Hardox wear parts quickly and cost-effectively.



INNERGY HEAVY INDUSTRIES (Spain)
Energy Equipment

INNERGY



MACHINE PROFILE

ProfileCut series

- Working area for sheets 12,000 x 4,500 mm
- Cutting of H, I, U beams up to HEB 1000 and a length of 12,000 mm
- Cutting of pipes Ø 30 – 700 mm and hollow sections up to a length of 12,000 mm
- 3D plasma rotator – pantograph with tilting up to 120° for weld preparation on beams, pipes and plates + auto-calibration feature (ACTG®)

INNERGY is a multinational company specializing in eco-friendly energy solutions. It consists of three divisions (Innergy Heavy Industries, Innergy Electric and Innergy Engineering), has three international headquarters (Spain, Chile and Japan) and has worked on more than 6,500 projects on 5 continents so far. At the Heavy Industries factory, the company produces everything from industrial burner boilers and biomass boilers to complete power generation plants.



MACHINE PROFILE

MG series

- Working area 15,000 x 3,000 mm (underwater cutting)
- Plasma rotator for weld preparation up to 45° with auto-calibration feature (ACTG®)
- Waterjet rotator for weld preparation up to 45° with auto-calibration feature (ACTG®)
- 2D waterjet head with two nozzles
- Scanner for Additional Beveling Process (ABP)

Oy Flinkenberg Ab is a family-owned business established in the year 1921. The Flinkenberg Steel Service Center specializes in selling and processing steel plates. Production services consist of four cutting technologies – waterjet, laser, plasma and oxyfuel – as well as reprocessing and finishing. Processed parts are delivered directly to customer's welding and machining cells. The excellent combination of company's modern machinery and a production management system guarantees reliable, cost-efficient and high-quality services.



ALTOS HORNOS DE MEXICO

Altos Hornos de México S.A.B. de C.V. (Mexico) Steel Production & Processing



MACHINE PROFILE

PlasmaCutter + Robot

- Working area 500 x 3,600 mm
- Robotic arm with plasma torch for 2D plasma cutting
- Robotic arm with magnetic unloading system

Altos Hornos de México S.A.B. de C.V. (AHMSA) is Mexico's largest steel plant. AHMSA operates a diversified industrial chain from iron ore and coal extraction to the production of various steel grades and related products. It currently operates at an annual rate of close to 5 million tons of liquid steel. Including its mining-related subsidiaries, AHMSA has a workforce of 19,000 employees.



MACHINE PROFILE

CombiCut series (Poland)

- Working area 16,500 x 3,500 mm
- Cutting of pipes Ø 100 – 1,000 mm up to a length of 12,000 mm
- Cutting of domes up to Ø 4,000 mm and a height of 1,200 mm
- Plasma rotator for weld preparation up to 45° with tool adjustment station

CombiCut series (France)

- Working area 16,500 x 3,500 mm
- Cutting of pipes Ø 100 – 1,000 mm up to a length of 12,000 mm
- Cutting of domes up to Ø 4,000 mm and a height of 1,200 mm
- Plasma rotator for weld preparation up to 45° with auto-calibration feature (ACTG®)

With more than 40 years of experience in the oil, gas, energy, chemical and pharmaceutical industries, AlliA is established as a major supplier for all types of pressure vessels, shell and tube heat exchangers and skidded units as well as turnkey industrial process installations – assembly of materials for chemical industry such as carbon steel, stainless steel, high and low-pressure pipes, special alloys, plastics and glass. The company is internationally active, with production sites in France and Poland.



MACHINE PROFILE

MSF-P series

- Working area 6,000 x 2,000 mm
- Conveyor-type cutting table + decoiler

1. gantry

- 2D plasma
- Automatic plate edge detection

2. gantry

- 2D plasma
- Automatic plate edge detection

The family-run company OFAS (Officine Favero Attrezzi Stampati) is specialising in the production and supply of spare parts for the agricultural and construction industries as well as gardening equipment. To meet the ever-growing demand for its products from Italian and international clients, the company (whose founding dates back to the 1950's) equipped its production with state-of-the-art machinery that enabled them to offer valuable, high-quality products, each step in the production of which has been carefully followed with attention, expertise and efficiency.



MACHINE PROFILE

MasterCut Compact series

- Working area 4,000 x 2,000 mm
- Plasma bevel head with auto-calibration feature (ACTG®)

BAU-Metall GmbH Rostock is a sought-after partner in the construction of impressive projects – among company's references count for example Hamburg's Elbe Philharmonic Hall and Berlin's Central Railway Station. The range of offered services includes heavy steel construction and metalworking such as supporting structures, stairs, sheet metal machining or manufacturing of windows and façades.



MACHINE PROFILE

PLS series

- Working area 28,500 x 3,500 mm
- Plasma rotator for weld preparation up to 45°
- Inkjet marking

OxyCut series

- Working area 12,000 x 3,000 mm
- 2D plasma
- 2D oxyfuel
- Inkjet marking

MG series

- Working area 28,500 x 3,500 mm
- Plasma rotator for weld preparation up to 50° with auto-calibration feature (ACTG®)
- Inkjet marking

MG series

- Working area 51,000 x 3,500 mm

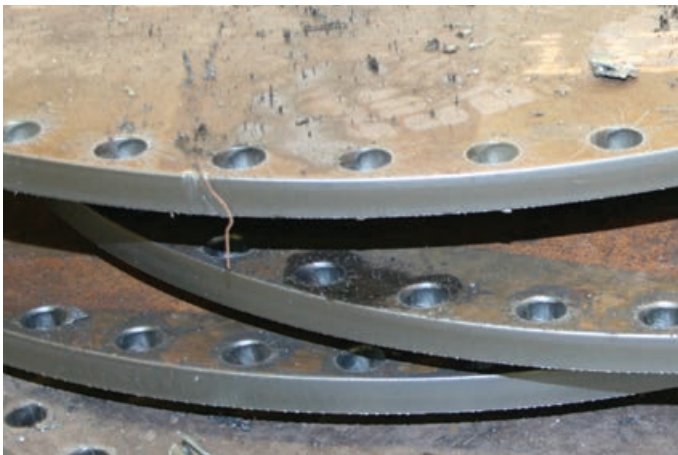
1. gantry

- Plasma rotator for weld preparation up to 50° with auto-calibration feature (ACTG®)
- Inkjet marking

2. gantry

- Plasma rotator for weld preparation up to 50° with auto-calibration feature (ACTG®)
- Inkjet marking

For more than 130 years, Lürssen has been designing and building ships to comply with the highest quality standards of systematic, precise manufacturing. As a result, the most advanced watercrafts are delivered from various locations of the Lürssen Group worldwide – including large yachts, special ships or most up-to-date naval vessels. To satisfy the cutting requirements of high-end shipbuilding, 4 complex MicroStep machines were installed in Lürssen's manufacturing sites at Lemwerder and Wolgast (Peene-Werft).



MACHINE PROFILE

PLS series

- Working area 27,000 x 3,000 mm
- 2D plasma
- 2D oxyfuel

MG series

- Working area 12,000 x 3,000 mm
- Plasma rotator for weld preparation up to 45° with auto-calibration feature (ACTG®)
- 2D plasma

MG series

- Working area 12,000 x 6,000 mm
- 2 x 2D plasma

MG series

- Working area 12,000 x 3,000 mm
- Plasma rotator for weld preparation up to 50° with auto-calibration feature (ACTG®)
- Scanner for Additional Beveling Process (ABP)
- Drilling up to Ø 40 mm and tapping up to M33

OxyCut series

- Working area 12,000 x 3,000 mm
- 4x G-multi station for stripe cutting with 3x 2D oxyfuel torches on each

Klöckner Stahl- und Metallhandel GmbH is a German subsidiary of the global Klöckner & Co Group. Founded as early as 1906, Klöckner is the biggest producer-independent distributor of steel and metal in the combined markets of Europe and America, having 11,000 employees and 290 branch offices in sixteen countries.

**BOSCH**

Robert Bosch GmbH (Germany)
Energy & Building Equipment



MACHINE PROFILE

MG series (Russia)

- Working area 15,000 x 3,500 mm
- Plasma rotator for weld preparation up to 50° with auto-calibration feature (ACTG®)

MG series (Germany)

- Working area 24,000 x 5,000 mm
- Cutting of domes Ø 300 – 4,000 mm up to a height of 1,000 mm

1. gantry

- Plasma rotator for weld preparation up to 50° with auto-calibration feature (ACTG®)
- Console for manual oxyfuel torch

2. gantry

- Plasma rotator for weld preparation up to 50° with auto-calibration feature (ACTG®)
- 2D oxyfuel
- Console for manual oxyfuel torch
- 3D scanner + mScan technology for compensation of the production-related deviation of dome shape by adjusting the generated cutting paths according to the true scanned shape of dome

CombiCut series (Germany)

- Working area 24,000 x 3,500 mm
- Plasma rotator for weld preparation up to 50° with auto-calibration feature (ACTG®)
- Automatic plate edge detection

The Bosch Group is a leading global supplier of technology and services in business sectors of Automotive Technology, Industrial Technology, Consumer Goods, and Energy and Building Technology. The Bosch Group comprises Robert Bosch GmbH and its more than 360 subsidiaries and regional companies in some 50 countries – including sales and service partners, Bosch's representation reaches out to 150 countries.



MACHINE PROFILE

MSF series

- Working area 6,000 x 2,000 mm
- Cutting of pipes Ø 30 – 300 mm and hollow sections up to a length of 6,000 mm
- Laser rotator for weld preparation up to 45° with auto-calibration feature (ACTG®) + 6 kW fiber laser source
- Scanner for Additional Beveling Process (ABP)
- Automatic plate edge detection
- Automatic shuttle table

Rytz Industriebau AG takes care of planning and production of commercial and industrial buildings in the field of steel, glass, metal and façade constructions. The products and services of the company are trusted by customers from all over the world such as the furniture giant Ikea or the luxury hotel chain Hilton.



MACHINE PROFILE

MG series

- Working area 6,000 x 3,700 mm
- Cutting of pipes Ø 100 – 700 mm up to a length of 6,000 mm
- Plasma rotator for weld preparation up to 45°
- 2D oxyfuel

MasterCut Compact series

- Working area 4,000 x 2,000 mm
- 2D plasma

With a revenue of 400 million euros and around 2,500 employees, Kraftanlagen München GmbH is one of the leading companies in the field of qualified plant and pipeline construction. Together with its subsidiaries the company forms Kraftanlagen Gruppe – a group of companies involved in planning and implementing international projects in the fields of energy and industrial infrastructure.



MACHINE PROFILE

MG series

- Working area 28,500 x 3,500 mm
- Plasma rotator for weld preparation up to 45° with auto-calibration feature (ACTG®)
- Inkjet marking

The traditional Hamburg-based shipyard Blohm+Voss, founded in 1877, became part of the Lürssen Group in 2016. With its business segments Merchant Vessels, Offshore Units, Passenger Ships and Yachts, the company keeps on setting international shipbuilding standards. In its centres of competence, a global network of developers, scientists and designers constantly rethinks and reinvents the concepts of "ships and shipbuilding" in new ways.



MACHINE PROFILE

CPCut series

- Cutting of pipes Ø 100 – 1,500 mm up to a length of 12,000 mm
- 3D plasma rotator with tilting up to 90° for weld preparation on pipes up to 45°
- Micro-percussion marking of pipes

FINOW Rohrsysteme GmbH has a long tradition as a steel-processing business. The former Franz Seiffert AG company produces high-quality components for the construction of power plants as well as chemical and industrial plants. Core expertise of the company is inductive bending and welding of piping elements. Since 2007 the company is part of Kraftanlagen Gruppe.



MACHINE PROFILE

MG series

- Working area 6,000 x 2,000 mm
- Cutting of domes Ø 500 – 1,500 mm up to a height of 700 mm
- Plasma rotator for weld preparation up to 45° with auto-calibration feature (ACTG®)
- 3D scanner + mScan technology for compensation of the production-related deviation of dome shape by adjusting the generated cutting paths according to the true scanned shape of dome
- Additional Beveling Process (ABP)
- Drilling up to Ø 40 mm and tapping up to M33

The AL-Cut AG job shop center, founded in 2009 and located in the Swiss canton of Lucerne, serves more than 250 customers with its state-of-the-art laser, plasma and waterjet cutting technologies as well as additional technologies and in-house 3D CAD programming.



MACHINE PROFILE

CombiCut series

- Working area 24,000 x 3,000 mm

1. gantry

- Plasma rotator for weld preparation up to 50° with auto-calibration feature (ACTG®)
- 2x 2D oxyfuel
- Drilling up to Ø 40 mm and tapping up to M33

2. gantry

- 3x 2D oxyfuel
- Drilling up to Ø 40 mm and tapping up to M33
- Micro-percussion marking

Prinzing Brennschneidtechnik GmbH & Co. KG located in Gingen an der Fils in southwest of Germany specializes in the production of custom parts using plasma and oxyfuel cutting technologies. Annealing, sandblasting, edging and welding are all part of the extensive range of Prinzing's services that small locksmiths as well as large companies can rely on thanks to the company's speed and flexibility in manufacturing.



MACHINE PROFILE

AquaCut series

- Working area 3,000 x 2,000 mm
- 2D waterjet

AquaCut series

- Working area 2,000 x 3,500 mm
- 2x 2D waterjet

3x AquaCut series

- Working area 1,200 x 2,500 mm
- 2D waterjet

AquaCut series

- Working area 1,500 x 2,000 mm
- 2D waterjet

AquaCut series

- Working area 1,500 x 2,000 mm
- 2x 2D waterjet

AquaCut series

- Working area 6,000 x 3,000 mm
- 2x 2D waterjet

AquaCut series

- Working area 6,000 x 3,500 mm
- 2x 2D waterjet

AquaCut series

- Working area 6,000 x 2,500 mm
- 2x 2D waterjet

AquaCut series

- Working area 1,500 x 2,500 mm
- 2x 2D waterjet

AquaCut series

- Working area 2,000 x 3,000 mm
- 2x 2D waterjet

AquaCut series

- Working area 2,000 x 3,000 mm
- 2x Waterjet rotator in parallel operation up to 45° with auto-calibration feature (ACTG®)

AWAC was established in 1990 with the aim of offering high quality waterjet job cutting as well as sales of cutting machines. Located in 4 sites across the Czech Republic, the company directly employs 75 people and another 30 in its subsidiary AB Jet s.r.o. The offered cutting range with thicknesses 0.1 – 250 mm reaches up to plate dimension 3 x 6 m with both 2D and 3D cutting. With its 19 machines, AWAC is the largest waterjet job center in Europe.



MACHINE PROFILE

MSF Pipe series

- Cutting of pipes $\varnothing 20 - 200$ mm and hollow sections up to a length of 6,500 mm
- 2D fiber laser – 2 kW

CynkoMet Sp. z o.o. is a modern Polish company focused on the production of agricultural machinery. Although registered under the name Cynkomet only in 2003, the local tradition of agricultural machinery production dates back to 1956. At CynkoMet, a professional and individual approach to each single customer and high ecological responsibility are essential.



MACHINE PROFILE

PLS series

- Working area 9,000 x 2,500 mm
- 2D plasma
- Felt pen marking

PLS series

- Working area 9,000 x 2,500 mm
- Cutting of pipes Ø 30 – 300 mm and hollow sections up to a length of 9,000 mm
- Plasma with 90° automatic tilting in Y axis

MG series

- Working area 7,500 x 2,500 mm
- 2D plasma

- Drilling up to Ø 22 mm and tapping up to M16

DRM series

- Cutting and trimming of domes Ø 500 – 3,200 mm up to a height of 760 mm
- 3D plasma rotator with tilting 90° for weld preparation on domes

MasterCut series

- Working area 8,000 x 2,500 mm
- 2D plasma
- Special marking via felt pen

Feldbinder is one of the largest European manufacturers of special vehicles in the commercial vehicle industry. Founded in 1975, the company manufactures a variety of silo vehicles, truck tankers, freight cars and containers made of aluminum and stainless steel for the transport of liquid, granulated and powdery substances.



MACHINE PROFILE

DRM series

- Working area for sheets 14,000 x 6,000 mm
- Cutting and trimming of domes Ø 500 – 5,500 mm with a max. height of 1,500 mm
- 3D plasma rotator – pantograph with tilting up to 120° for weld preparation on domes and plates + auto-calibration feature (ACTG®)
- 3D scanner + mScan technology for compensation of the production-related deviation of dome shape by adjusting the generated cutting paths according to the true scanned shape of dome
- Micro-percussion marking

Being a specialist for domes and special pressed parts, Slawinski & Co. GmbH has been supplying tailored solutions for small businesses as well as global corporations for more than 100 years. The company relies on its long-standing experience and innovative production machinery. Each supplied dished end is a precisely manufactured original that finds its application in nuclear power plant construction or in transport of chemical liquids.



MACHINE PROFILE

• Fully automatic sheet cutting line consisting of 8 cutting gantries, an automatic crane, an input wagon and 2 output conveyors

4x CombiCut series

- Working area 28,000 x 3,000 mm
- 2x 2D plasma
- Inkjet marking
- Automatic plate edge detection

2x CombiCut series

- Working area 28,000 x 3,000 mm

Each machine has two gantries with:

- 2x 2D plasma

- Inkjet marking
- Automatic plate edge detection

CombiCut series

- Working area 28,000 x 7,000 mm
- 2x 2D plasma

MG series

- Working area for sheets 2x 12,600 x 2,800 mm
- Plasma rotator for weld preparation up to 50° with auto-calibration feature (ACTG®)
- 2D plasma
- Scanner for Additional Beveling Process (ABP)

The 1958 established state-owned company ZMJ is China's leading manufacturer of coal mining and excavating equipment with a domestic market share of over 45%. As one of the few manufacturers in China the company is able to produce 3 of the 4 components of a complete coal mining system: hydraulic roof supports, armored-face conveyors and roadheaders. ZMJ's client base includes the biggest names among Chinese coal mining companies as well as foreign companies.



MACHINE PROFILE

DS series

- Working area 6,000 x 2,000 mm
- Plasma rotator for weld preparation up to 45° with auto-calibration feature (ACTG®)
- 2D oxyfuel
- Micro-percussion marking
- Drilling up to Ø 40 mm and tapping up to M33
- Automatic loading, feeding and unloading of plates

Reijrink Staalconstructie BV, founded in 1967, consists of a construction factory in Esbeek and a steel construction works in Someren. Since its establishment, the company has developed from a sole proprietorship into a renowned, medium-sized company with about 100 enthusiastic employees specializing in design, manufacture and assembly of constructions such as warehouses, office buildings, shelters, houses and stables. The company also manufactures stairs, railings and fences.



MACHINE PROFILE

MG series

- Working area 12,000 x 3,500 mm
- Cutting and of domes Ø 500 – 3,500 mm with a max. height of 950 mm
- Plasma rotator for weld preparation up to 50° with auto-calibration feature (ACTG®)
- 3D scanner + mScan technology for compensation of the production-related deviation of dome shape by adjusting the generated cutting paths according to the true scanned shape of dome

GEA is one of the largest suppliers for the food processing industry and a wide range of other industries. The international technology group focuses on process technology, components and sustainable energy solutions for sophisticated production processes in various end-user markets. The GEA Brewery Systems GmbH takes care of the brewing technology and covers the complete brewing process – from the mill to the valve manifold of the bright beer tanks.



MACHINE PROFILE

DRM series

- Working area 3,500 x 7,000 mm
- Cutting and trimming of domes Ø 500 – 5,500 mm with a max. height 1,500 mm
- 3D plasma rotator – pantograph with tilting up to 120° for weld preparation on domes + auto-calibration feature (ACTG®)
- 3D scanner + mScan technology for compensation of the production-related deviation of dome shape by adjusting the generated cutting paths according to the true scanned shape of dome

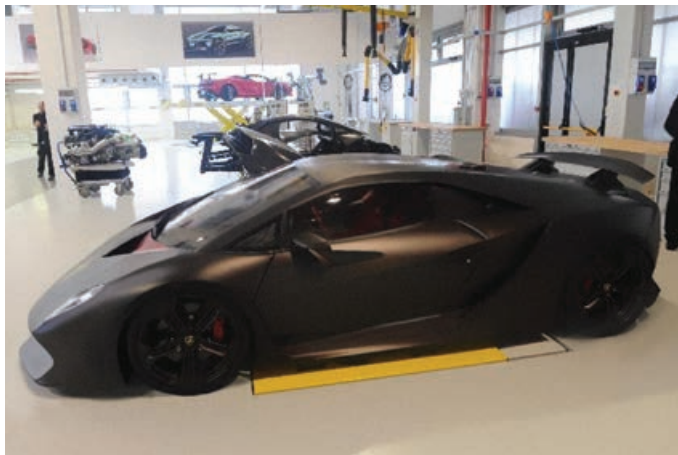
MG series

- Working area 12,000 x 3,500 mm
- Plasma rotator for weld preparation up to 50° with auto-calibration feature (ACTG®)

Bödenpresswerk Daaden GmbH, founded in 2001 in Daaden, Germany specializes in the production of high-quality cold-formed vessel heads and dished ends. Heads for storage containers, torispherical and semi-elliptical domes as well as special shapes from mild and stainless steels are being manufactured in Bödenpresswerk's three production areas.



Automobili Lamborghini S.p.A. (Italy) Automotive



MACHINE PROFILE

MicroCut series

- Working area 2,000 x 1,000 mm
- 2D plasma

Founded in 1963, Automobili Lamborghini is headquartered in Sant'Agata Bolognese in the north east of Italy. The company ranks among world's top-class super sports cars manufacturers. With more than 120 dealers worldwide, Automobili Lamborghini is building on a succession of its dynamic and elegant super sports cars.



MACHINE PROFILE

MG series (Slovenia)

- Working area 13,500 x 3,000 mm
- 2x 2D plasma

2x PLS series (Bulgaria)

- Working area 13,000 x 3,000 mm
- 2x 2D plasma

Established in 1932 in Bergheim, Austria, Palfinger AG counts among the leading international manufacturers of hydraulic lifting systems and maritime lifesaving equipment. The broad portfolio contains over 150 models of lifting equipment such as loader cranes, timber, recycling, marine and wind cranes, hooklifts or truck mounted forklifts. MicroStep machines work at Palfinger's production sites in Slovenia and Bulgaria.



Caterpillar Tosno LLC (Russia)
Vehicles & Construction Machinery



MACHINE PROFILE

PLS series

- Working area 28,500 x 2,500 mm
- 2x 2D plasma
- Inkjet marking

PLS series

- Working area 13,500 x 2,500 mm
- 2D plasma
- 2x 2D oxyfuel
- Inkjet marking

Caterpillar is the world's leading manufacturer of construction and mining equipment, diesel and natural gas engines, industrial gas turbines and diesel-electric locomotives and also a leading services provider. The company's plant in Tosno was established in 2000. It specializes in the production of heavy machinery components and employs more than 700 highly qualified specialists. Caterpillar Tosno LLC is the first company in Russia certified to Class A.



MACHINE PROFILE

CombiCut series

- Working area 4,500 x 2,000 mm
- 2x 2D plasma
- CCD camera for scanning of templates and contours

The company BASF Schwarzheide GmbH from Lusatia, Germany is one of the largest European locations within the global BASF corporation whose broad portfolio ranges from chemicals, plastics, performance products and crop protection products to oil and gas. The cutting machine is used mainly for maintenance of the extensive machine park on site.



MACHINE PROFILE

MSF Compact series

- Working area 1,000 x 1,500 mm
- 2D fiber laser – 2 kW

Salzgitter Mannesmann Forschung GmbH is the main research company of the Salzgitter Group. With around 280 employees it is one of the leading European research institutions in steel sector. In addition to industrial contracts for development and description of metallic materials and composites the company is also conducting failure and damage analysis using accredited test laboratories.



MACHINE PROFILE

MG series (Netherlands)

- Working area 18,000 x 3,000 mm
- Plasma rotator for weld preparation up to 45° with tool adjustment station
- 2D oxyfuel

MG series (Netherlands)

- Working area 18,000 x 3,000 mm
- Plasma rotator for weld preparation up to 45° with auto-calibration feature (ACTG®)
- Inkjet marking

MG series (China)

- Working area 18,000 x 3,000 mm
- Plasma rotator for weld preparation up to 45°

with auto-calibration feature (ACTG®)

MG series (Romania)

- Working area 12,000 x 3,000 mm
- Plasma rotator for weld preparation up to 45° with auto-calibration feature (ACTG®)
- Inkjet marking

MicroMill series (Romania)

- Working area 3,000 x 1,500 mm
- 2.5D routing

The globally operating shipyard group Damen started out in 1927 as a family-owned company amongst the shipbuilding community on the River Merwede in the Netherlands. Today, more than 6,000 vessels later, the enterprise operates over 30 yards and Service Hubs all over the world, covering all areas from newly built vessels through ship repair and conversion to supply of marine components and related services.



MACHINE PROFILE

MG series

- Working area 21,000 x 4,500 mm

1. gantry

- Plasma rotator for weld preparation up to 50° with tool adjustment station
- 2D plasma

2. gantry

- 2x 2D plasma

CombiCut series

- Working area 6,000 x 3,000 mm
- 3x 2D oxyfuel

MG series

- Working area 6,000 x 2,500 mm
- Plasma rotator for weld preparation up to 50° with auto-calibration feature (ACTG®)

The Riikonen brothers started a business as a machine repair shop. Uncompromising and determined work has grown the company over the past 30 years towards becoming one of the biggest services providers for the transport and material handling industries. Among company's customers count several renowned companies, one of the biggest being John Deere.



**WACKER
NEUSON**

Wacker Neuson Kragujevac d.o.o. (Serbia)
Construction Equipment & Machinery



MACHINE PROFILE

MG series

- Working area 6,000 x 3,000 mm
- Cutting of pipes Ø 30 – 300 mm and hollow sections up to a length of 6,000 mm
- Plasma rotator for weld preparation up to 50° with auto-calibration feature (ACTG®)
- 2D oxyfuel
- Drilling up to Ø 30 mm and tapping up to M20

Wacker Neuson is one of the leading international manufacturers of concrete technology, compaction equipment, construction site technology and compact construction machinery with more than 40 subsidiaries, 140 sales and service centers and 12,000 sales and service points worldwide.



MACHINE PROFILE

MG series

- Working area 24,000 x 3,500 mm
- Plasma rotator for weld preparation up to 50° with auto-calibration feature (ACTG®)

As a part of the Konecranes world-leading group of Lifting Businesses, ZAO Konecranes is the leading producer of cranes and crane equipment in Eastern Europe and the CIS countries. The company specializes in manufacturing of bridge, gantry and special purpose cranes as well as manufacturing of lifting and handling equipment, production of metal constructions and wholesale industrial equipment.



MACHINE PROFILE

PLS series

- Working area 9,000 x 2,500 mm
- Plasma rotator for weld preparation up to 45°

PLS series

- Working area 9,000 x 2,500 mm
- Plasma rotator for weld preparation up to 45°
- 2D oxyfuel

CombiCut series

- Working area 12,000 x 3,000 mm
- 2D plasma
- 7x 2D oxyfuel

7x CombiCut series

- Working area 12,000 x 3,000 mm

- Plasma rotator for weld preparation up to 50° with auto-calibration feature (ACTG®)

2x CombiCut series

- Working area 6,000 x 3,000 mm
- Plasma rotator for weld preparation up to 50° with auto-calibration feature (ACTG®)

MasterCut series

- Working area 6,000 x 3,000 mm
- 2D plasma

CombiCut series

- Working area 6,000 x 2,000 mm
- Plasma rotator for weld preparation up to 50° with auto-calibration feature

(ACTG®)

2x CombiCut series

- Working area 6,000 x 3,000 mm
- 2D plasma

CombiCut series

- Working area 12,000 x 3,000 mm
- 2D plasma

CombiCut series

- Working area 6,000 x 3,000 mm
- 2D plasma
- Drilling up to Ø 40 mm and tapping up to M24

Tikhvin Freight Car Building Plant is a high-tech innovation enterprise that meets state-of-the-art criteria of transport machinery production. Car assembling and foundry engineering have been combined in an effective production tandem that provides high productivity and manufacturing flexibility. Extensive degree of automation, application of modern design solutions and energy-efficient technologies ensure TVSZ's production capacity of a level that is equal to leading global companies.



MACHINE PROFILE

DRM-PL series

- Working area 18,000 x 16,000 mm
- Oxyfuel rotator for weld preparation up to 50° with auto-calibration feature (ACTG®)
- Inkjet marking
- Sand blasting unit for primer removal + Plasma marking
- Operator platform with MMI console on the gantry

MG series

- Working area 52,500 x 3,500 mm

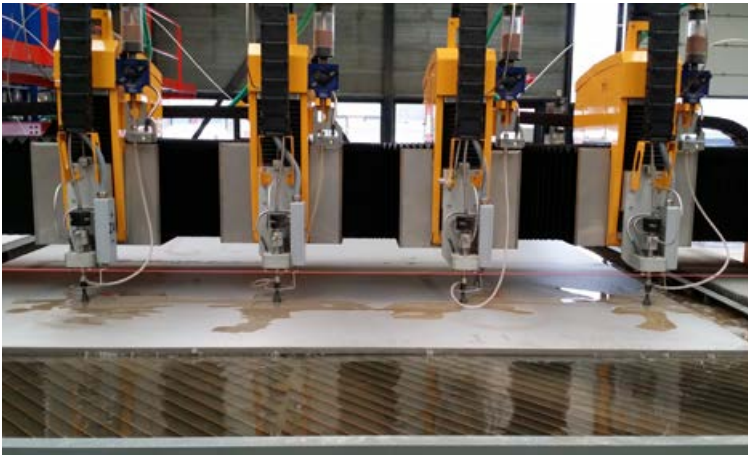
1. gantry

- Plasma rotator for weld preparation up to 50° with auto-calibration feature (ACTG®)
- Inkjet marking

2. gantry

- Plasma rotator for weld preparation up to 50° with auto-calibration feature (ACTG®)
- Laser marking

German Naval Yards Kiel is specializing in the design and construction of naval vessels such as frigates, corvettes and patrol boats as well as in the construction of superyachts. The company combines know-how from more than 180 years of shipbuilding tradition and has a unique shipyard infrastructure with one of the largest dry docks in Europe in operation.



MACHINE PROFILE

AquaCut series

- Working area 12,000 x 3,000 mm
- 4x 2D waterjet

MG series

- Working area 12,000 x 3,500 mm
- Plasma rotator for weld preparation up to 50° with auto-calibration feature (ACTG®)

Thure Snijtechniek B.V. was founded in December 2011 by Mark Ruiter. The company is the legacy of PWS Industrieel Snijwerk, a well-known name in the cutting technology in the Netherlands. Thure Snijtechniek B.V. uses multiple cutting technologies such as waterjet, laser and plasma. Service is a key factor in the company's operations. All investments are made with top-class delivery in mind.



Irving Shipbuilding Inc. (Canada)
Shipyards & Offshore



MACHINE PROFILE

DRM-PL series

- Working area 15,000 x 13,000 mm
- Plasma rotator for weld preparation up to 45° with auto-calibration feature (ACTG®)
- Scanner for detection of weld seam position
- Inkjet marking
- Sand blasting unit for primer removal + Plasma marking
- Automatic plate alignment
- Operator platform with MMI console on the gantry

Irving Shipbuilding Inc. is one of the most advanced shipbuilders in North America. Headquartered in Halifax, Nova Scotia, the company specializes in the efficient construction, manufacture, conversion and maintenance of ships and offshore platforms. Irving Shipbuilding Inc. is a member of the J. D. Irving Limited Business Group, a family owned business with offices in Canada and the United States. As Canada's chosen shipbuilder, Irving Shipbuilding is also working for the Royal Canadian Navy.



MACHINE PROFILE

MG series + Robot

- Working area 12,000 x 3,000 mm
- Cutting of pipes Ø 100 – 2,000 mm up to a length of 12,000 mm
- Plasma rotator for weld preparation up to 50° with auto-calibration feature (ACTG®)
- 2D oxyfuel
- Robotic arm with oxyfuel technology for bevel cutting of pipes
- Laser scanner for measuring of the real shape of pipe

Jan De Nul Group is a leading expert in dredging and marine construction activities, as well as in specialized services for the offshore industry of oil, gas and renewable energy. These core marine activities are further enhanced by Jan De Nul Group's in-house civil and environmental capabilities offering clients a complete package solution.



MACHINE PROFILE

CombiCut series

- Working area 12,000 x 3,500 mm
- Plasma rotator for weld preparation up to 50° with auto-calibration feature (ACTG®)
- Inkjet marking
- 2D oxyfuel

Ideally situated on the intersection point of international shipping lanes, the roots of the Peters Werft date back to 1871. Today, the shipyard's facilities allow to build ships up to a length of 138 m and a width of 22 m – such as container ships, multipurpose freighters, passenger ships, special ships and mega-yachts. The growing demands in shipbuilding are continually being met by the shipyard's innovative technology and customized design solutions.



MACHINE PROFILE

CombiCut series

- Working area 34,500 x 4,000 mm
- 2x 2D plasma
- Micro-percussion marking
- Automatic plate edge detection
- Operator platform with MMI console on the gantry

Industeel, a French subsidiary of ArcelorMittal, is specialized in the production of hot rolled as well as forged steel plates, ingots and formed pieces with the largest dimension range worldwide. Producing carbon, low alloy and stainless steels and nickel-based alloys, Industeel offers a complete range of high-quality steel grades designed to meet the most severe customer specifications. Industeel covers 6 production facilities with a long tradition of metallurgical know-how and different product specialties.



MACHINE PROFILE

PipeCut series

- Cutting of pipes Ø 48 – 610 mm and hollow sections up to a length of 6,000 mm
- Cutting of domes up to Ø 1,200 mm and a height of 350 mm
- Plasma rotator for weld preparation up to 45° with auto-calibration feature (ACTG®)

Founded in 1991, Gree Electric Appliances Inc. is the world's largest manufacturer of air conditioning systems. The Chinese company is part of the Gree Group, which ranges from residential air conditioning and central air conditioning systems to air source water heaters, smartphones, home appliances and refrigerators. Small houses as well as large international projects such as the National Stadium of South Africa, or the Expo 2015 in Milan are air-conditioned using Gree's technology.



MACHINE PROFILE

MSF series

- Working area 6,000 x 2,000 mm
- 2D fiber laser – 3 kW
- Automatic shuttle table

DRM series

- Cutting and trimming of domes up to Ø 3,200 mm and a height of 1,000 mm
- 3D plasma rotator – pantograph with tilting up to 120° for weld preparation on domes + auto-calibration feature (ACTG®)
- 3D scanner + mScan technology for compensation of the production-related deviation of dome shape by adjusting the generated cutting paths according to the true scanned shape of dome

Faddikorr is a Hungarian family business established in 1996. The company mainly produces stainless steel pressure vessels, individually manufactured machines and equipment used in food industry. Taking account of today's technical demands, the company applies modern technologies both in design and production with the aim of providing customized features and meeting special requirements of its customers.



MACHINE PROFILE

MSF series

- Working area 12,000 x 3,000 mm
- Laser bevel head for weld preparation up to 45° with auto-calibration feature (ACTG®)
- 2D fiber laser
- 6 kW fiber laser source
- Automatic shuttle table

MSF Max series

- Working area 12,000 x 3,000 mm with flexible working length in the range 6,000 – 12,000 mm
- Laser bevel head for weld preparation up to 45° with auto-calibration feature (ACTG®) + 8 kW fiber laser source
- 2D fiber laser – 6 kW
- Mobile telescopic safety cabin with integrated laser sources

and control system

MG series

- Working area 12,000 x 3,000 mm
- Plasma rotator for weld preparation up to 50° with auto-calibration feature (ACTG®)
- Scanner for Additional Beveling Process (ABP)
- Inkjet marking

ADQ is the Italian leader in distribution and pre-processing of heavy plates and coils in high quality steel grades for a great variety of industrial applications. Thanks to the long-established relationships with some of the main European steel producers, ADQ can supply a complete and up-to-date range of plates in commercial sizes or pre-processed according to customer's request including quality and production certificates.



MACHINE PROFILE

AquaCut series + Robot

- Fully automated working cell
- Working area: 4 cutting zones with rotary hydraulic holders for positioning of products
- 2D waterjet cutting simultaneously with 2 tool stations
- Robotic manipulator
- Automatic waste removal via conveyor in water tank
- Rinsing chamber for washing of products
- Drying chamber for drying of products by air blow
- 50 HP high pressure pump

The German-based sanitary and tableware producer Villeroy & Boch is a highly innovative company with representation in over 125 countries. Since its foundation in 1748, the company's strong roots in European culture have shaped the development of a premium brand that is now a household name all over the world. Mondial SA serves as the company's production facility in Romania.



MACHINE PROFILE

MSF series

- Working area 4,000 x 2,000 mm
- Cutting of pipes Ø 20 – 200 mm and hollow sections up to a length of 6,000 mm
- 2D fiber laser – 4 kW
- Automatic shuttle table
- Automatic loading, feeding and unloading of pipes

MG series

- Working area 7,500 x 2,000 mm
- Plasma rotator for weld preparation up to 45° with auto-calibration feature (ACTG®)
- 2D oxyfuel
- Drilling up to Ø 40 mm and tapping up to M33

MSF series

- Working area 3,000 x 1,500 mm
- 2D fiber laser – 4 kW
- Automatic shuttle table

BUMET specializes in the development, production and assembly of sheet metal components, complete metal structures and metal tooling. The company is renowned for its comprehensive knowledge of sheet metal work and extensive design of metal products for the automotive, medical, agricultural and food industries along with production of heaters and steel constructions. BUMET Hungary Kft. was founded in 2001 as a subsidiary of the Dutch company BUMET B.V.



MACHINE PROFILE

MSF series

- Working area 6,000 x 2,000 mm
- Laser bevel head for weld preparation up to 45° with auto-calibration feature (ACTG®) + 5 kW fiber laser source
- Automatic shuttle table
- MSLoad for automatic loading/unloading of sheets and cut parts

MG series

- Working area 7,500 x 2,000 mm
- Plasma rotator for weld preparation up to 50° with auto-calibration feature (ACTG®)
- Drilling up to Ø 40 mm and tapping up to M33

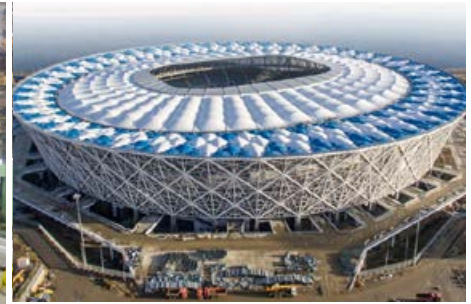
MSF series

- Working area 6,000 x 2,500 mm
- Cutting of pipes Ø 20 – 500 mm and hollow sections up to a length of 6,000 mm
- Laser bevel head for weld preparation up to 45° with auto-calibration feature (ACTG®) + 5 kW fiber laser source
- Automatic shuttle table

Ferropatent was founded in 1992. Presently it consists of its own trading company, a metal-processing company and a logistics company that operates a roofed store of 15,000 m², housing an average stock of 15,000 metric tons of various steel materials. Ferropatent Zrt. is equipped with facilities enabling processing of materials by plasma, oxyfuel and laser cutting machines, straightening, rolling and sandblasting machines as well as two sawing machines.



ZAO Kurganstalmost (Russia) Bridge Construction & Civil Engineering



MACHINE PROFILE

DRM series

- Working area 28,000 x 3.600 mm
- Drilling up to Ø 50 mm and tapping up to M30
- Inkjet marking

ZAO Kurganstalmost is Russia's leading enterprise in manufacturing of bridge steel constructions. With an annual output of 65,000 tons the company covers 25% of Russia's bridge construction market. The basic competitive advantage of the company is manufacturing of complex steel constructions for individual projects. Bridges manufactured at the plant in Kurgan can be found in cities from the Far East to Europe. The company participated in the construction of some of Russia's major sports halls and stadiums.



MACHINE PROFILE

CombiCut series

- Working area 9,000 x 2,500 mm
- Channel for cutting of H and U beams
- Plasma rotator for weld preparation up to 50° with auto-calibration feature (ACTG®)
- Micro-percussion marking
- 2D oxyfuel
- Drilling up to Ø 40 mm and tapping up to M33

Mipromet is a company with more than 25 years of experience in the production of lifting equipment. A significant part of its portfolio consists of lifting beams and specialized gripping devices. The design process in the company is based on Machinery Directive and European EN standards. In combination with the experience of its design team and a computer-aided production process, the company is able to guarantee its customers state-of-the-art and reliable product solutions.

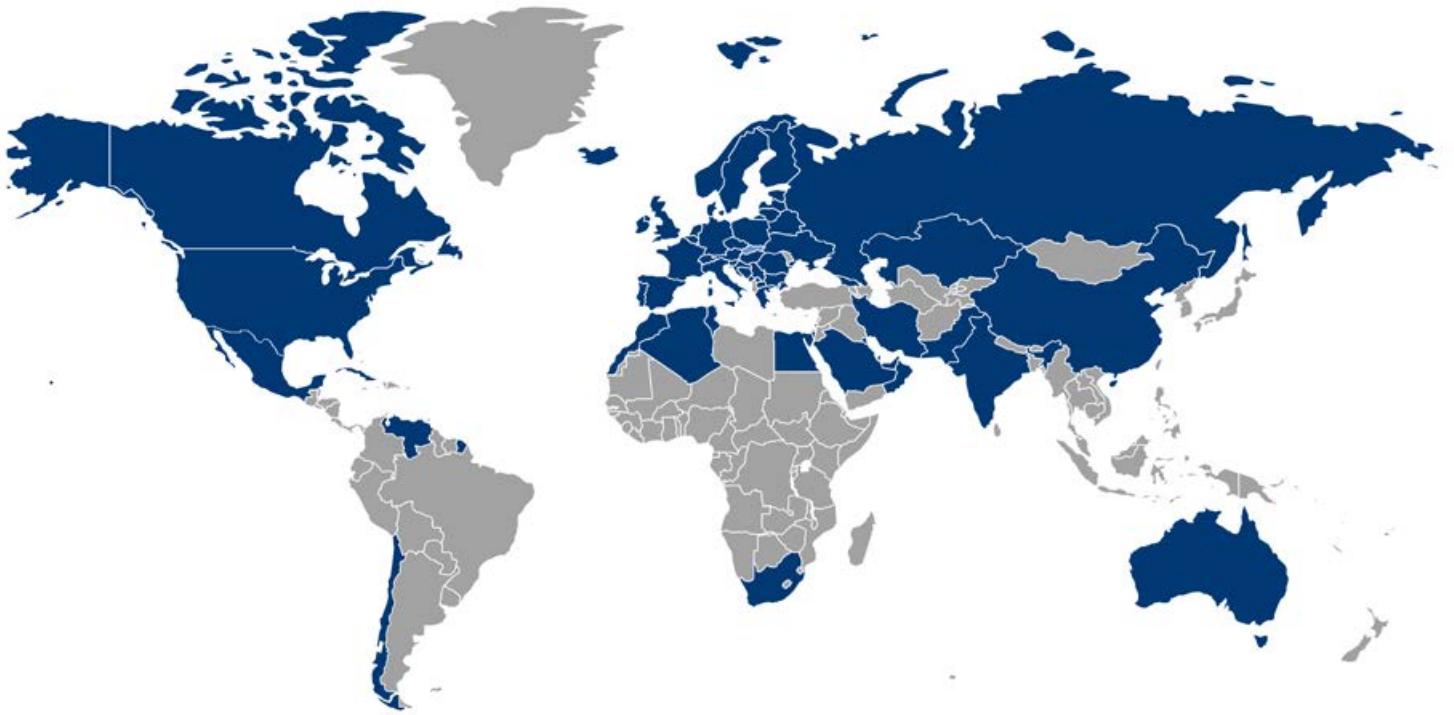


MACHINE PROFILE

CombiCut series

- Working area 6,000 x 2,000 mm
- Cutting of pipes Ø 30 – 500 mm and hollow sections up to a length 6,000 mm
- Plasma rotator for weld preparation up to 45° with auto-calibration feature (ACTG®)
- Scanner for Additional Beveling Process (ABP)
- 2D oxyfuel

Tatneft is one of the largest Russian oil companies whose production accounts for about 8% of all crude oil produced in the Russian Federation and over 80% of crude oil produced in the CIS Republic of Tatarstan. Apart from domestic production the company follows a strategy of continuous expansion of the production base to outside territories including the CIS and the Middle East countries. Activities of the company – production of oil, gas and petrochemical products – comply with high standards of environmental and industrial safety.



MicroStep – Your Partner for Cutting and Automation

The company MicroStep was established in 1991 by members of the Department of Automation and Regulation, Faculty of Electrical Engineering and Information Technology, Slovak University of Technology in Bratislava, Slovakia with the aim to develop and deliver microprocessor-based control technology to various branches of industry. Over the years, the company has become one of the leading suppliers of cutting equipment that supplied more than 2,500 cutting machines worldwide in cooperation with strong channel partners spread over 54 countries.

MicroStep is offering the full range of contemporary cutting technologies – plasma, laser, oxyfuel and waterjet – along with a great variety of supplemental equipment and software for drilling, tapping, countersinking, marking as well as process synchronization, automated material handling and robotic solutions. As a producer of not only machines themselves but also of control systems and CAM software the company delivers solutions that fit custom demands and are future-proof with respect to machine extensions in size and additional technologies. MicroStep's machines can process different types of materials including plates, pipes, profiles, beams, domes and elbows while implementing advanced automation processes. All of MicroStep's machines are controlled by iMSNC®, a multi-tasking PC-based control system developed and produced in-house. The focus of the company are hi-tech machines that accommodate industry's latest trends – delivery of fully automatic workplaces, which integrate different cutting/drilling/marking technologies in combination with automatic loading and unloading systems, following demands for higher level of machinery automation and interconnection of control systems, CAM software and ERP systems.

MicroStep's rapid growth in its 25+ years' history resulted in founding of several domestic and international subsidiaries, most notable of which are MicroStep Europa GmbH in Germany, MicroStep USA, MicroStep Canada and MicroStep China. MicroStep delivers its products through a professional network of authorized representatives that cover sales and service activities in 54 countries all around the world.



Headquarters of MicroStep
in Bratislava, Slovakia

Industry	Customer	Country	Machine series	Page
Agricultural Equipment & Machinery	CynkoMet Sp. z o.o.	PL	MSF Pipe	38
	OFAS S.p.A	I	MSF-P	26
Chemical Industry	BASF Schwarzheide GmbH	D	CombiCut	48
Construction Equipment & Machinery	BAUER Maschinen GmbH	D	CombiCut, MG	12
	Caterpillar Tosno LLC	RUS	PLS	47
	Wacker Neuson Kragujevac d.o.o.	SRB	MG	52
Crane & Lifting Equipment	Mipromet Sp. z o.o.	PL	CombiCut	68
	Palfinger AG	BG, SLO	MG, PLS	46
	ZAO Konecranes	UA	MG	53
Domes Production & Processing	Bödenpresswerk Daaden GmbH	D	DRM, MG	44
	Slawinski & Co. GmbH	D	DRM	40
Electric Appliances	Gree Electric Appliances Inc.	CHN	PipeCut	61
Energetics & Power Plants	INNERGY HEAVY INDUSTRIES	E	ProfileCut	22
	Finow Rohrsysteme GmbH	D	CPCut	34
	Kraftanlagen München GmbH	D	MG	32
Mining Equipment & Machinery	Solintal Lrd, S.A.	E	CombiCut, MasterCut	16
	Zhengzhou Coal Mining Machinery (Group) Co., Ltd.	CHN	CombiCut	41
Oil & Gas	NOV Kostroma LLC	RUS	MG	13
	PAO Tatneft	RUS	CombiCut	69
Pressure Vessels & Boilers	Allia	F, PL	CombiCut	25
	Faddikorr Kft.	H	DRM, MSF	62
	GEA Brewery Systems GmbH	D	MG	43
	Robert Bosch GmbH	D, RUS	CombiCut, MG	30
Sanitary & Household Products	SC Mondial SA / Villeroy & Boch Group	RO	AquaCut + Robot	64
Shipyards & Offshore	Agility Subsea Fabrication AS	N	CombiCut	17
	Blohm+Voss B.V. & Co. KG	D	MG	33
	Chantiers de l'Atlantique	F	MSF Max	10
	Damen Shipyards Group	NL, CHN, RO	MG, MicroMill	50
	Neptune Shipyards BV	NL	MG	19
	Fr. Lürssen Werft GmbH & Co. KG	D	MG, PLS, OxyCut	28
	German Naval Yards Kiel GmbH	D	DRM-PL, MG	55
	Irving Shipbuilding Inc.	CAN	DRM-PL	57
	Jan De Nul NV	B	MG + Robot	58
	Meyer Turku Oy	FIN	CombiCut, DRM, DRM-PL	4
	Peters Werft GmbH	D	CombiCut	59
	Royal IHC	NL	CombiCut, MG	5
	Smulders Group	B, PL	MG	7
Steel Processing & Job Cutting	Acciai di Qualità S.p.A.	I	MG, MSF, MSF Max	63
	AL-Cut AG	CH	MG	35
	AWAC spol. s r.o.	CZ	AquaCut	37
	Bohnacker Metall GmbH & Co. KG	D	MasterCut, MG	11
	BUMET Hungary Kft.	H	MG, MSF	65
	CACCIN Lavorazione Metalli s.r.l.	IT	MSF	20
	Damatech d.o.o.	SLO	DRM	21
	Ferropatent Zrt.	H	MG, MSF	66
	Klöckner & Co Germany GmbH	D	MG, OxyCut, PLS	29
	Namaqua Engineering	ZA	MSF, ProfileCut	6
	Oy Flinkenberg Ab	FIN	MG	23
	Prinzing Brennschneidtechnik GmbH & Co. KG	D	CombiCut	35
	stürmsfs AG	CH	CombiCut, MG, MicroLas	8
	Thure Snijtechniek B.V.	NL	AquaCut, MG	64
Steel Production	Altos Hornos de México S.A.B. de C.V.	MEX	Robot	24
	Industeel France / ArcelorMittal Group	F	CombiCut	60
	Salzgitter Mannesmann Forschung GmbH	D	MSF Compact	49
	thyssenkrupp Stahlkontor GmbH	D	MG	14
Steel & Structural Steel Construction	BAU-Metall GmbH Rostock	D	MasterCut Compact	27
	Reijrink Staalconstructie BV	NL	DS	42
	Rytz Industriebau AG	CH	MSF	31
	Zamil Steel Buildings India Pvt. Ltd.	IND	CombiCut	15
	ZAO Kurganstalmost	RUS	DRM	67
Vehicles & Transport Systems	Automobili Lamborghini S.p.A.	I	MicroCut	45
	BRÜGGEN Oberflächen- und Systemlieferant GmbH	D	MG	9
	Doppelmayr Seilbahnen GmbH	A	DRM, MG	3
	Feldbinder Spezialfahrzeugwerke GmbH	D	DRM, MasterCut, MG, PLS	39
	Guangzhou Hongxun Elevator Machinery Co., Ltd.	CHN	ProfileCut	18
	Konekorjaamo Riikonen Oy	FIN	CombiCut, MG	51
	Tikhvin Freight Car Building Plant	RUS	CombiCut, MasterCut, PLS	54



Your Partner for
Cutting and Automation



Complex & Multi-functional

There is hardly any other CNC system with such a variety of technologies provided by a single machine and for such a variety of materials: sheets, pipes, profiles as well as domes. MicroStep is offering such versatile and efficient solutions by nature.

See the cut sample above – bevel cutting of contours and openings, drilling, tapping, countersinking, punch marking and contour marking, all delivered in a fully automatic mode by our multi-functional plasma cutting machine MG.



Contact the MicroStep
representative in your area!

For more information visit:
www.microstep.eu/dealers



NEW

Product Catalog

Information on all MicroStep cutting systems
can be found in our current product catalog.