

3M™ Quick Release Welding Helmet Series QR



Technical Datasheet

3M™ Quick Release Welding Helmet Series QR

Description:

Safety helmet solution for 3M™ Speedglas™ Welding Shield 9100, 3M™ Speedglas™ Welding Shield 100 and 3M™ Welding Shield 10 with quick release rail (QR) and recommended safety helmets (as seen in table below)

Safety helmet
• 3M™ Peltor™ H701
• 3M™ Peltor™ G3001
• *MSA V-guard
• *Scott Uni-Safe
• *Scott HC600
• *Auboueix Iris
• * Martindale CenturionConcept
• *Schubert BEN/BOP series
• *Protector HC 43 TM 3
• *MSA Thermal Guard
• *Bullard series 861R

*Non 3M manufactured safety helmets

Tests have been made to ensure that the attachment to the safety helmet will fit to the helmets listed in the table. 3M does not control future changes made on non-3M manufactured safety helmets.

Applications:


The system is to be used wherever there is a need for safety helmet in combination with a welding shield. The quick release rail allows the user to attach the welding shield to a safety helmet without making any modifications to the safety helmet.

Approvals:

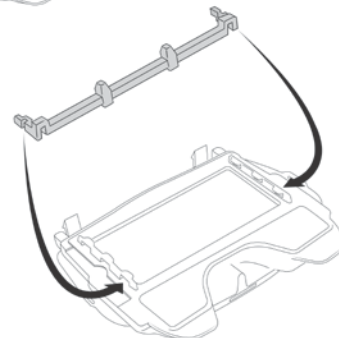
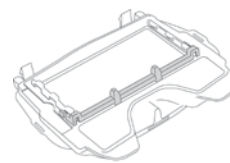
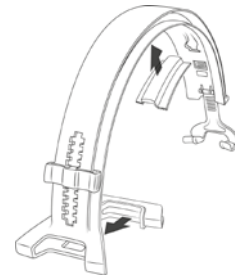
The system is a combination of individually approved products, a welding shield + a safety helmet. Always read and follow the User Instruction provided with each individual component of the welding shield or safety helmet assembly. Ensure that all components in the system are approved to your working conditions. Tests have been made to ensure that the attachment to the safety helmet will fit to the listed helmets above.

3M does not control future changes made on non-3M manufactured safety helmets.

For approvals regarding 3M welding shields and safety helmets see appropriate documentation.

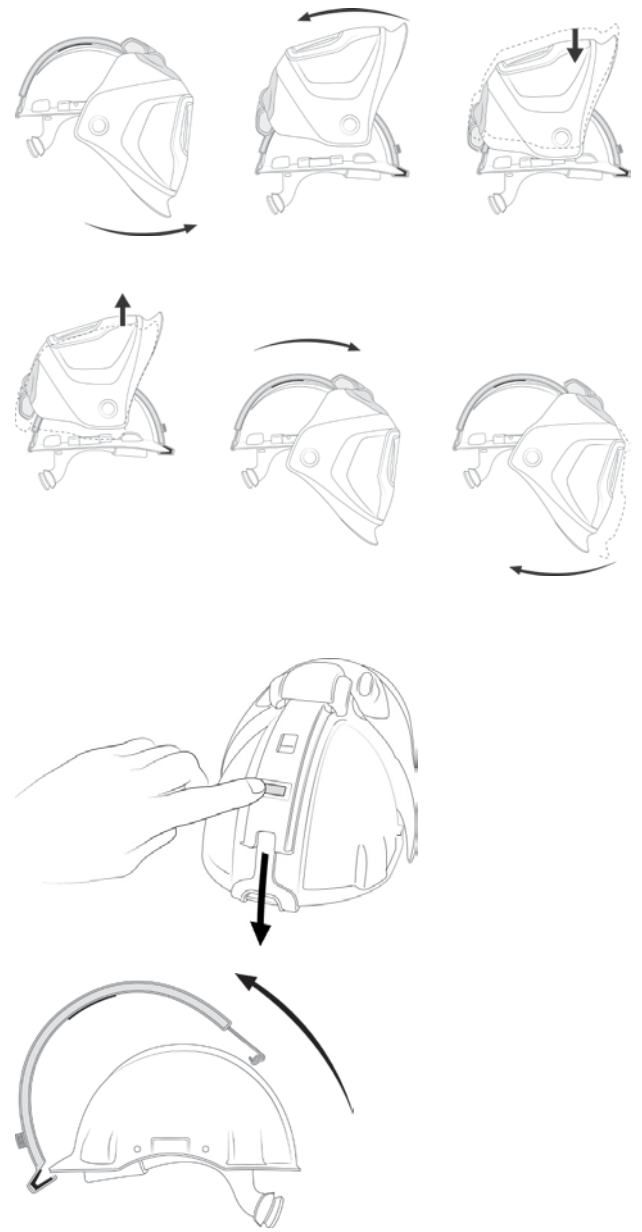
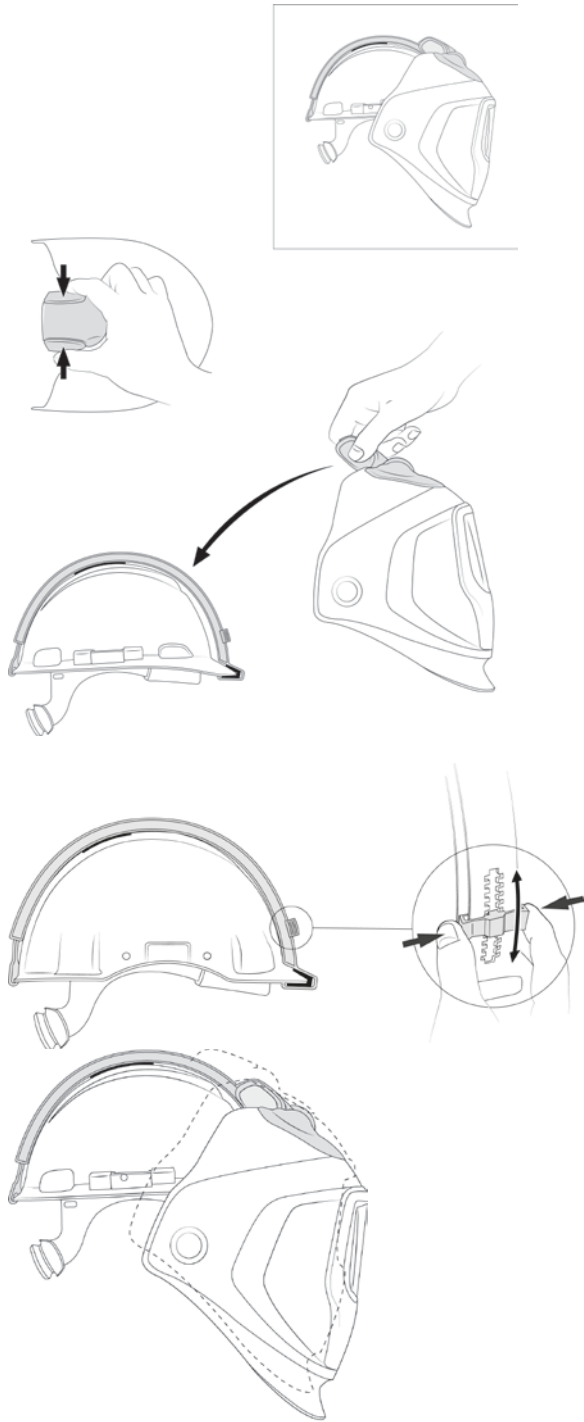
 The optional requirement for the safety helmet, resistance to molten metal splash (EN 397:2012 clause 5.2.5, marked MM) cannot be assured, when using the safety helmet in combination with the QR rail which is not molten metal splash approved.

Operating instructions:

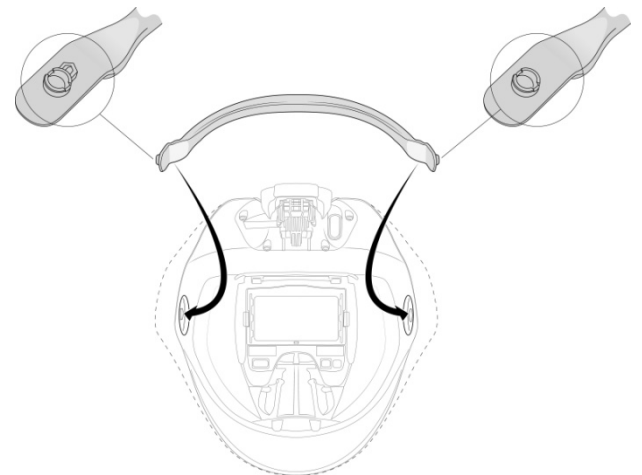
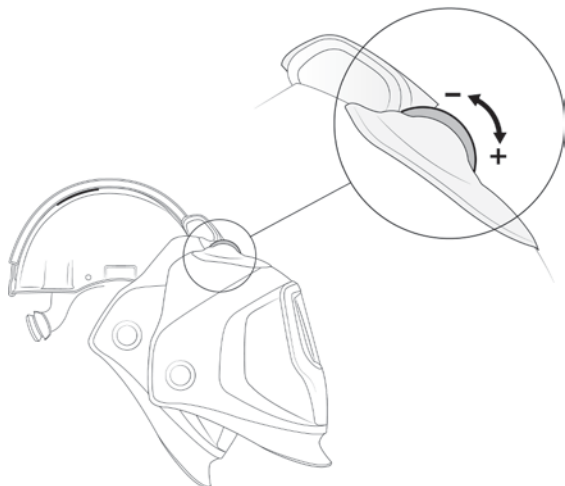


The distance bar only needs to be attached to the 3M™ Speedglas™ Welding Filters 9100X and 9100XX to prevent the inner protection plate from being scratched against the rail.

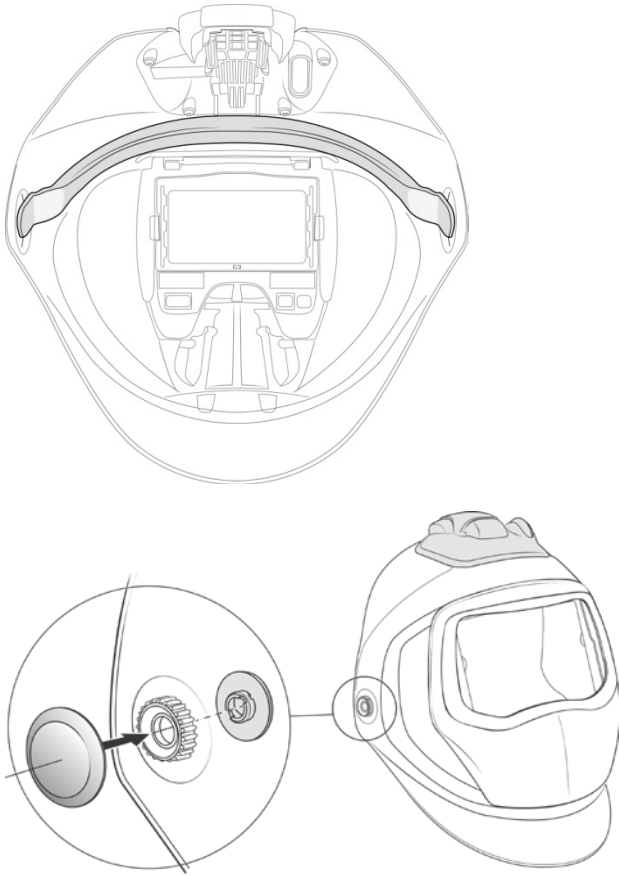
3M™ Speedglas™ Quick Release Rail for Safety Helmet



The ear muff bar needs to be attached in the 3M™ Speedglas™ Welding Shield 9100 when it is going to be used with earmuffs.



3M™ Speedglas™ Quick Release Rail for Safety Helmet



Technical specification	
Operating temperature	-5°C to +55°C
Weight: Quick Release Rail: 3M welding shield 10-QR: Speedglas welding shield 100-QR: Speedglas welding shield 9100-QR:	
Material: Quick Release Rail: 3M welding shield 10-QR: Speedglas welding shield 100-QR: Speedglas welding shield 9100-QR: Ear muff Bar for shield 9100-QR: Welding filter distance bar: Silver front: SideWindows: For 3M safety helmet H-701 see appropriate documentation	PPA PPA/PP/TPE PA/PPA/PP/TPE PPA/PP/TPE PA PA PA PA PC

Spare parts, accessories and consumables:

Part no.	Description
10 11 80	3M welding shield 10-QR
78 25 00	Speedglas welding shield 100-QR
78 26 00	Speedglas welding shield 9100-QR
10 11 90	3M welding shield 10-QR excluding rail
78 15 00	3M welding shield 10-QR excluding rail
58 16 00	Speedglas welding shield 9100-QR excluding rail
19 71 39	Quick release rail for welding shield series QR
19 71 42	Quick release rail rubber parts
19 71 43	Pivot cover plate kit for welding shield series QR
53 11 00	Welding filter distance bar for Speedglas welding filters 9100X/9100XX
53 31 00	Ear muff bar for Speedglas welding shield 9100-QR