

DATA SHEET

MT451W M9 3m

094-500059-00000

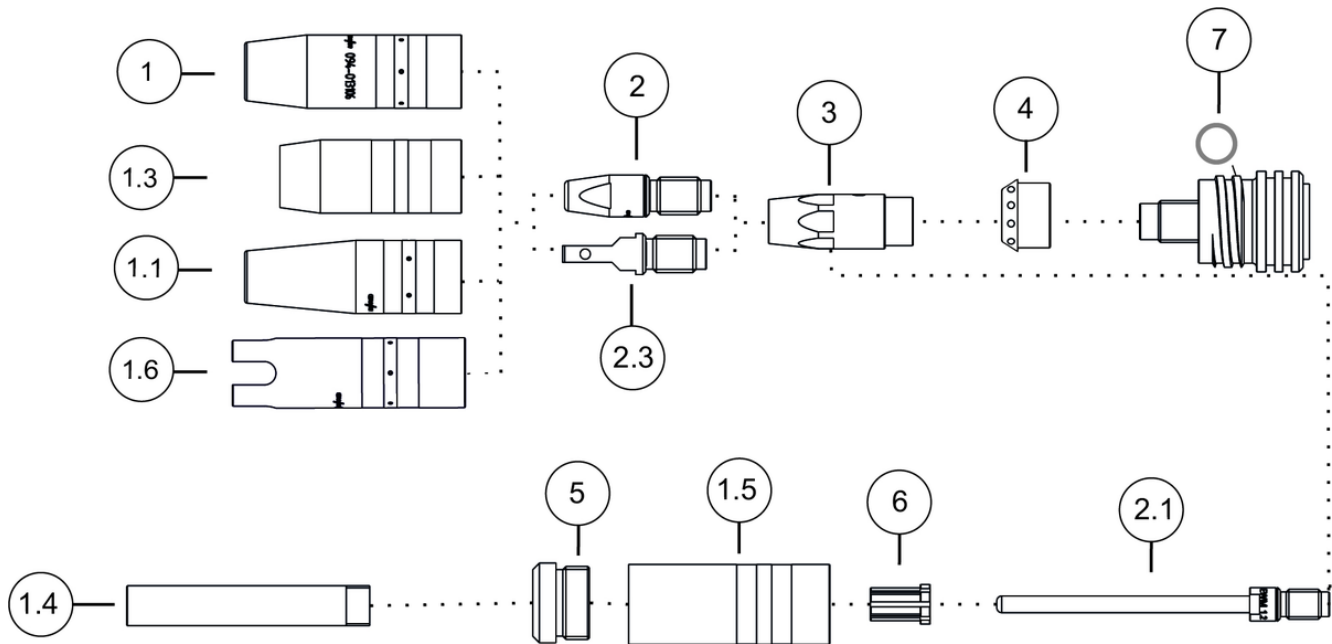


- Outstanding welding characteristics thanks to separate gas supply and optimal cooling
- Water-cooled MIG/MAG welding torch
- Fits all welding machines with a Euro torch connector
- **Highlights EWM MT welding torches:**
 - Extremely robust and durable, perfect for use in rough environments
 - Ergonomic, elliptically shaped grip reduces the amount of force required to operate the welding torch
 - Fatigue-free working thanks to balanced design
- **Recommendation:**
 - For feeding steel wires, we recommend using a steel liner with a capillary tube
 - For feeding CrNi, aluminium, flux-cored and CuSi wires, we recommend a PA combined liner with a guide tube (alternatively you can use a Teflon or carbon Teflon liner)

Duty cycle CO2	500 A / 100 %
Duty cycle M21	450 A / 100 %
Duty cycle M21 Impuls	350 A / 100 %
Wire Ø	0.8 mm - 1.6 mm
Connection poles	Euro torch connector
Connection	Euro torch connector
Thread, contact tip	M9
Hose package length	3 m
Bend angle torch neck	45 °
Test mark	CE UK EAC

DATA SHEET

Consumables



Item	Item no.	Designation
1	094-013105-00001	GN TR 22 71mm Ø 13mm. Gas nozzle
1	094-013107-00001	GN TR 22 71mm Ø 18mm. Gas nozzle
1	094-019822-00001	GN TR 22 65mm Ø 18mm. Gas nozzle, short
1	094-019821-00001	GN TR 22 65mm Ø 15mm. Gas nozzle, short
1	094-013106-00001	GN TR 22 71mm Ø 15mm. Gas nozzle
1.1	094-019853-00001	GN NG TR22X4 71mm Ø 13mm. Gas nozzle, very conical, narrow gap welding
1.3	094-019554-00000	GN FCW TR 22x4 59.5mm. Gas nozzle, Innershield
1.4	094-019626-00000	GN NG M12 73mm. Gas nozzle, narrow gap welding
1.4	094-022226-00000	GN NG M12 76mm. Gas nozzle, narrow gap welding
1.5	094-019623-00000	GNC TR22x4. Gas nozzle body
1.6	094-020945-00000	GN TR 22 80mm Ø 20mm. Spot gas nozzle
2	094-013533-00001	CT CuCrZr M9 x 35mm Ø 1.6mm. Contact tip
2	094-013528-00001	CT CuCrZr M9 x 35mm Ø 0.8mm. Contact tip
2	094-013529-00001	CT CuCrZr M9 x 35mm Ø 0.9mm. Contact tip
2	094-013532-00001	CT CuCrZr M9 x 35mm Ø 1.4mm. Contact tip
2	094-013548-00001	CTAL E-Cu M9 x 35mm Ø 1.6mm. Contact tip, aluminium welding
2	094-013543-00001	CTAL E-Cu M9 x 35mm Ø 0.8mm. Contact tip, aluminium welding
2	094-013544-00001	CTAL E-Cu M9 x 35mm Ø 0.9mm. Contact tip, aluminium welding
2	094-013545-00001	CTAL E-Cu M9 x 35mm Ø 1.0mm. Contact tip, aluminium welding
2	094-013547-00001	CTAL E-Cu M9 x 35mm Ø 1.4mm. Contact tip, aluminium welding
2	094-016118-00000	CTAL E-Cu M8 x 30mm Ø 1.2mm. Contact tip, aluminium welding
2	094-016119-00000	CTAL E-Cu M8 x 30mm Ø 1.4mm. Contact tip, aluminium welding
2	094-016120-00000	CTAL E-Cu M8 x 30mm Ø 1.6mm. Contact tip, aluminium welding
2	094-016117-00000	CTAL E-Cu M8 x 30mm Ø 1.0mm. Contact tip, aluminium welding
2	094-014024-00000	CT CuCrZr M8 x 30mm Ø 0.8mm. Contact tip
2	094-016109-00000	CT E-Cu M8 x 30mm Ø 0.8mm. Contact tip
2	094-016110-00000	CT E-Cu M8 x 30mm Ø 0.9mm. Contact tip
2	094-016111-00000	CT E-Cu M8 x 30mm Ø 1.0mm. Contact tip
2	094-016116-00000	CTAL E-Cu M8 x 30mm Ø 0.9mm. Contact tip, aluminium welding
2	094-016112-00000	CT E-Cu M8 x 30mm Ø 1.4mm. Contact tip
2	094-016113-00000	CT E-Cu M8 x 30mm Ø 1.6mm. Contact tip

Item	Item no.	Designation
2	094-007238-00000	CT E-Cu M8 x 30mm Ø 1.2mm. Contact tip
2	094-013129-00000	CT CuCrZr M8 x 30mm Ø 0.9mm. Contact tip
2	094-014222-00000	CT CuCrZr M8 x 30mm Ø 1.0mm. Contact tip
2	094-013113-00000	CT M8 CuCrZr 30mm, 1.2mm. Contact tip
2	094-014191-00000	CT CuCrZr M8 x 30mm Ø 1.4mm. Contact tip
2	094-014192-00000	CT CuCrZr M8 x 30mm Ø 1.6mm. Contact tip
2	094-016115-00000	CTAL E-Cu M8 x 30mm Ø 0.8mm. Contact tip, aluminium welding
2.1	094-019618-00000	CT CuCrZr M9 x 100mm Ø 1.6mm. Contact tip, narrow gap welding
2.1	094-019617-00000	CT CuCrZr M9 x 100mm Ø 1.2mm. Contact tip, narrow gap welding
2.1	094-019616-00000	CT CuCrZr M9 x 100mm Ø 1.0mm. Contact tip, narrow gap welding
2.1	094-021189-00001	CT CuCrZr M9 x 100mm Ø 0,8mm. Contact tip, narrow gap welding
2.1	094-020019-00000	CT CuCrZr M9 x 100mm Ø 1.4mm. Contact tip, narrow gap welding
2.3	094-016159-00001	CT ZWK CuCrZr M9 x 35 mm Ø 1,2 mm. Forced-contact contact tip
2.3	094-025533-00000	CT ZWK CuCrZr M9 x 35 mm Ø 1,6 mm. Forced-contact contact tip
2.3	094-017007-00001	CT ZWK CuCrZr M9 x 35 mm Ø 1,0 mm. Forced-contact contact tip
3	094-013110-00002	CTH CuCrZr M8 x 37.1mm. Contact tip holder
3	094-013109-00003	CTH CuCrZr M8 x 34.1mm. Contact tip holder
3	094-013540-00002	CTH CuCrZr M9 x 37.5mm. Contact tip holder
3	094-013539-00002	CTH CuCrZr M9 x 34.5mm. Contact tip holder
4	094-013096-00004	GD Ø11,5 mm, L=11,9 mm. Gas diffusers
5	094-019625-00000	IT ES M22X1,5 M12X1. Capillary tube
6	094-019627-00000	ZH GDE 15mm Ø 5mm x 10mm. Centring sleeve
7	094-025089-00000	18,5 mm x 2 mm. O-ring for gas nozzle holder
-	094-013802-00000	LPTFE COMBI 2.7mm x 4.7mm 3m. Combined liner, Teflon
-	094-021160-00006	LPA 2.3mm x 4.7mm 6m. Combined liner, PA
-	094-021160-00008	LPA 2.3mm x 4.7mm 8m. Combined liner, PA
-	094-021160-00010	LPA 2.3mm x 4.7mm 10m. Combined liner, PA
-	094-013800-00000	LPTFE COMBI 1.5mm x 4.0mm 3m. Combined liner, Teflon
-	094-013800-00004	LPTFE COMBI, D=1,5 x 4,0 mm, 4 m. Combined liner, Teflon
-	094-013800-00005	LPTFE COMBI, D=1,5 x 4,0 mm, 5 m. Combined liner, Teflon
-	094-013801-00000	LPTFE COMBI 2.0mm x 4.0mm 3m. Combined liner, Teflon
-	094-013801-00004	LPTFE COMBI, D=2,0 x 4,0 mm, 4 m. Combined liner, Teflon
-	094-013801-00005	LPTFE COMBI, D=2,0 x 4,0 mm, 5 m. Combined liner, Teflon
-	094-013802-00004	LPTFE COMBI 2.7mm x 4.7mm 4m. Combined liner, Teflon
-	094-013666-00000	LPA COMBI 2.3mm x 4.7mm 4m. Combined liner, PA
-	094-013802-00005	LPTFE COMBI 2.7mm x 4.7mm 5m. Combined liner, Teflon
-	094-013871-00000	LCPTFE COMBI 1.5mm x 4.0mm 3m. Combined liner, carbon teflon
-	094-013871-00004	LCPTFE COMBI 1.5mm x 4.0mm 4m. Combined liner, carbon teflon
-	094-013871-00005	LCPTFE COMBI 1.5mm x 4.0mm 5m. Combined liner, carbon teflon
-	094-013828-00000	LCPTFE COMBI 2.0mm x 4.0mm 3m. Combined liner, carbon teflon
-	094-013828-00004	LCPTFE COMBI 2.0mm x 4.0mm 4m. Combined liner, carbon teflon
-	094-013828-00005	LCPTFE COMBI 2.0mm x 4.0mm 5m. Combined liner, carbon teflon
-	094-013829-00000	LCPTFE COMBI 2.7mm x 4.7mm 3m. Combined liner, carbon teflon
-	094-013829-00004	LCPTFE COMBI 2.7mm x 4.7mm 4m. Combined liner, carbon teflon
-	094-013829-00005	LCPTFE COMBI 2.7mm x 4.7mm 5m. Combined liner, carbon teflon
-	094-013667-00000	LPA COMBI 2.3mm x 4.7mm 5m. Combined liner, PA
-	094-013665-00000	LPA COMBI 2.3mm x 4.7mm 3m. Combined liner, PA
-	094-013565-00000	LPA COMBI 2.0mm x 4.0mm 5m. Combined liner, PA
-	094-013077-00000	LPA COMBI 2.0mm x 4.0mm 4m. Combined liner, PA
-	094-013687-00005	LPA COMBI 1.4mm x 4.0mm 5m. Combined liner, PA
-	094-013687-00004	LPA COMBI 1.4mm x 4.0mm 4m. Combined liner, PA

Item	Item no.	Designation
-	094-013687-00000	LPA COMBI 1.4mm x 4.0mm 3m. Combined liner, PA
-	094-013076-00000	LPA COMBI 2.0mm x 4.0mm 3m. Combined liner, PA
-	094-013662-00502	LSTC 2.4mm x 4.6mm 3.6m. Steel liner, insulated
-	094-014221-00501	LSTC 1.5mm x 3.8mm 5.6m. Steel liner, insulated
-	094-013075-00501	LSTC 1.5mm x 3.8mm 4.6m. Steel liner, insulated
-	094-013074-00501	LSTC 1.5mm x 3.8mm 3.6m. Steel liner, insulated
-	094-014224-00501	LSTC 2.0mm x 4.6mm 5.6m. Steel liner, insulated
-	094-013664-00502	LSTC 2.4mm x 4.6mm 5.6m. Steel liner, insulated
-	094-007239-00501	LSTC 2.0mm x 4.6mm 3.6m. Steel liner, insulated
-	094-013663-00502	LSTC 2.4mm x 4.6mm 4.6m. Steel liner, insulated
-	094-013531-00001	CT CuCrZr M9 x 35mm Ø 1.2mm. Contact tip
-	094-013530-00001	CT M9 CuCrZr 1.0mm. Contact tip
-	094-013546-00001	CTAL E-Cu M9 x 35mm Ø 1.2mm. Contact tip, aluminium welding
-	094-014223-00501	LSTC 2.0mm x 4.6mm 4.5m. Steel liner, insulated
-	094-013967-00000	4,0MMX1,0MM. O-ring for Euro torch connector
-	092-013428-30001	SRP MT301G/MT451W AL M9. Consumables set, aluminium
-	092-013428-30000	SRP MT301G/MT451W ST/CR M9. Consumables set, steel/chromium nickel
-	092-013428-40000	SRP MT301G/MT451W ST/CR M8. Consumables set, steel/chromium nickel
-	092-013428-40001	SRP MT301G/MT451W AL M8. Consumables set, aluminium
-	094-016038-00001	TT SW5-SW12MM. Torch key
-	098-005149-00000	O-Ring Picker. O-Ring Picker