

# DATA SHEET

## comfyTig 18-1 CW 12P 3m flex

094-500145-00603

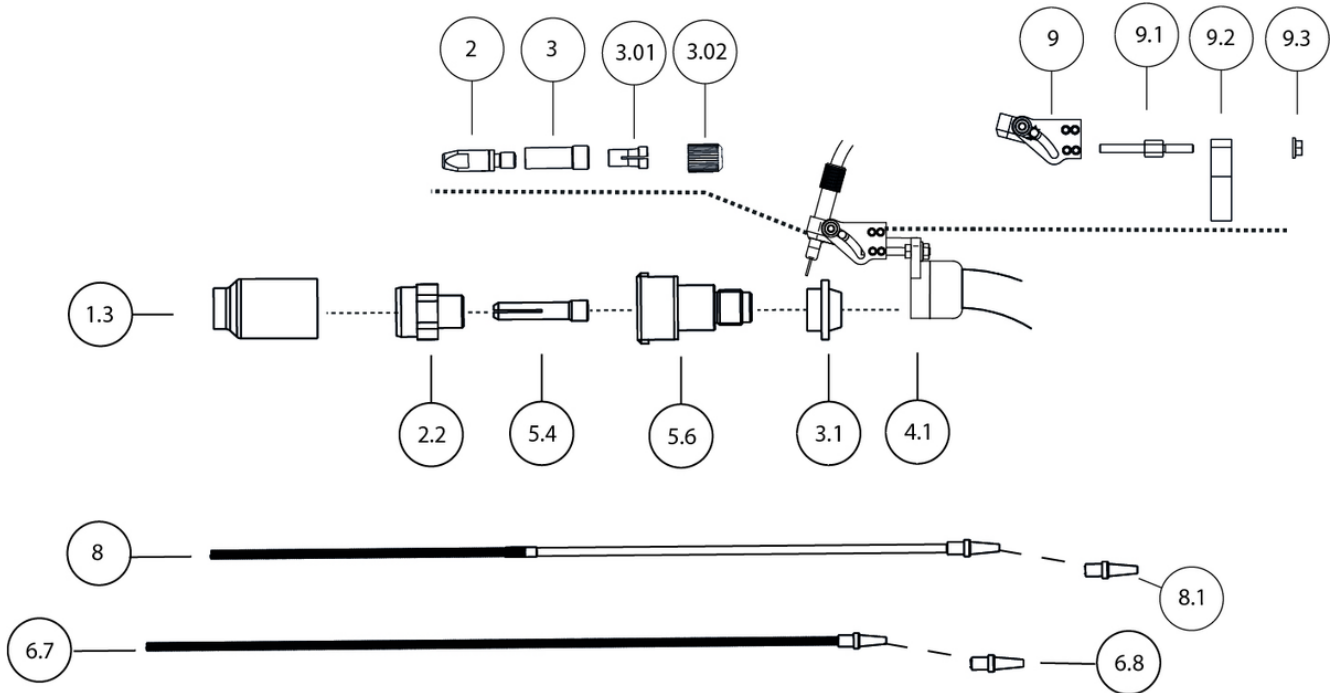


- Water cooled TIG welding torch with a separate cold wire feed
- Hardly any difference in operation when switching from MIG/MAG to cold or hot wire welding
- Wire feed integrated in the grip
- Replaceable steel/plastic liner
- Replaceable wire feed rotatable through 270°
- Excellent HF safety

Duty cycle DC-	300 A / 60 %
Duty cycle AC	210 A / 100 %
Electrode Ø	1 mm - 4 mm
Connection poles	Decentral
Torch connection	Decentral 35 mm <sup>2</sup> (pin Ø 13 mm <sup>2</sup> )
Control cable connection	Burndy, 12-pole
Shielding gas supply	G 1/4" RH, crown nut
Hose package length	3 m
Filler wire Ø	0.8 mm - 1.6 mm
Wire support	flex.
Test mark	CE UK EAC

# DATA SHEET

## Consumables



Item	Item no.	Designation
1.3	094-001320-00000	GNDIF TIG 17/18/26/18SC 6.5x42mm. Gas nozzle for gas lens
1.3	094-001321-00000	GNDIF TIG 17/18/26/18SC 8x42mm. Gas nozzle for gas lens
1.3	094-001322-00000	GNDIF TIG 17/18/26/18SC 9.5x42mm. Gas nozzle for gas lens
1.3	094-001195-00000	GNDIF TIG 17/18/26/18SC 11x47mm. Gas nozzle for gas lens
1.3	094-001196-00000	GNDIF TIG 17/18/26/18SC 12.5x42mm. Gas nozzle for gas lens
1.3	094-001323-00000	GNDIF TIG 17/18/26/18SC 16x42mm. Gas nozzle for gas lens
2	094-013071-00000	CT CuCrZr M6 x 28mm Ø 0.8 mm. Contact tip
2	094-013072-00000	CT CuCrZr M6 x 28mm Ø 1.0mm. Contact tip
2	094-014317-00000	CT CuCrZr M6 x 28mm Ø 1.2mm. Contact tip
2	094-013122-00000	CT CuCrZr M6 x 28mm Ø 0.9mm. Contact tip
2	094-016105-00000	CTAL E-Cu M6 X 28 mm Ø 0.8 mm. Contact tip, aluminium welding
2	094-016106-00000	CTAL E-Cu M6 X 28 mm Ø 0.9 mm. Contact tip, aluminium welding
2	094-016107-00000	CTAL E-Cu M6 X 28 mm Ø 1.0 mm. Contact tip, aluminium welding
2	094-016108-00000	CTAL E-Cu M6 X 28 mm Ø 1.2 mm. Contact tip, aluminium welding
2.2	094-001363-00000	COL DIF TIG-SR 18SC Ø 4.0mm. Collet body with gas lens
2.2	094-012699-00000	COL DIF TIG-SR 18SC Ø 2.4mm. Collet body with gas lens
2.2	094-012698-00000	COL DIF TIG-SR 18SC Ø 1.6mm. Collet body with gas lens
2.2	094-012697-00000	COL DIF TIG-SR 18SC Ø 1.0mm. Collet body with gas lens
2.2	094-001362-00000	COL DIF TIG-SR 18SC Ø 3.2mm. Collet body with gas lens
3	094-019544-00000	VH M6/M9X0,75 L=24,5. Connecting sleeve
3.01	094-001082-00000	CO LINER D=4.0MM. Collet chuck
3.01	094-021827-00000	CO LINER D=3.3MM. Collet chuck
3.02	094-009034-00002	UEM M9X0,75MM. Crown nut
3.1	094-001194-00000	INS TIG 17/18/26 XL. Adapters
4.1	094-008422-00000	O-RING 23.0x2.0. O-ring
5.4	094-017285-00000	COL 2.4x29.5mm. Collet
5.4	094-019605-00000	COL 1.0x29.5mm. Collet
5.4	094-019288-00000	COL 3.2x29.5mm. Collet
5.4	094-017284-00000	COL 1.6x29.5mm. Collet

Item	Item no.	Designation
5.6	094-021094-00001	SCOL comfyTig. Collet body mount
6.7	092-018694-00003	D=2,0 x 4,0 mm, 3,5 m, CrNi. Steel liner, stainless steel
6.7	092-018696-00003	D=1,5 x 3,3 mm, 3,5 m, CrNi. Steel liner, stainless steel
6.7	092-018696-00004	D=1,5 x 3,3 mm, 4,5 m, CrNi. Steel liner, stainless steel
6.7	092-018695-00003	D=1,5 x 3,3 mm, 3,5 m, St. Steel liner
6.7	092-018694-00004	D=2,0 x 4,0 mm, 4,5 m, CrNi. Steel liner, stainless steel
6.7	092-018693-00003	D=2,0 x 4,0 mm, 3,5 m, St. Steel liner
6.7	092-018697-00004	D=2,0 x 4,0 mm, 4,5 m, CuZn. Steel liner, brass
6.7	092-018694-00005	DFS 2,0MM/4,0MM L=5,5M CRNI. Steel liner, stainless steel
6.7	092-018697-00003	D=2,0 x 4,0 mm, 3,5 m, CuZn. Steel liner, brass
6.7	092-018693-00004	D=2,0 x 4,0 mm, 4,5 m, St. Steel liner
6.7	092-018695-00004	D=1,5 x 3,3 mm, 4,5 m, St. Steel liner
6.8	094-020069-00000	ES 4,0MM. Inlet guide for steel liners
6.8	094-020159-00000	ES 3,3MM. Inlet guide for steel liners
-	092-025476-00003	LCPTFE+ADD COMBI 2.0 mm x 4.0 mm 3.5 m. Combined liner, carbon teflon + additive
-	092-018706-00004	LPA COMBI 2.0mm x 4.0mm 4.5m. Combined liner, PA
-	092-018706-00003	LPA COMBI 2.0mm x 4.0mm 3.5m. Combined liner, PA
-	092-025476-00004	LCPTFE+ADD COMBI 2.0 mm x 4.0 mm 4.5 m. Combined liner, carbon teflon + additive
-	094-014032-00001	WFN 4.0mm. Inlet guide for plastic liners
-	094-019613-00000	FH KPL. Flex bracket (15-41°)
-	094-019169-00001	M4X10 L=36MM SW7. Large spool/drum
-	094-020666-00000	HP WIG AWS D=16,65 T=10 X=18. Bracket for wire feed
-	074-000071-00000	M4 / 7 / Zn. Hexagonal nut
-	094-019389-00000	WCe 20; 3.2 x 75 mm. Tungsten electrode, grey
-	094-020278-00000	E3; 3,2 x 75 mm. Tungsten electrode, purple
-	094-019390-00000	WCe 20; 4.0 x 75 mm. Tungsten electrode, grey
-	094-020276-00000	E3; 1,6 x 75 mm. Tungsten electrode, purple
-	094-020277-00000	E3; 2,4 x 75 mm. Tungsten electrode, purple
-	094-019388-00000	WCe 20; 2,4 x 75 mm. Tungsten electrode, grey
-	094-019387-00000	WCe 20; 1,6 x 75 mm. Tungsten electrode, grey